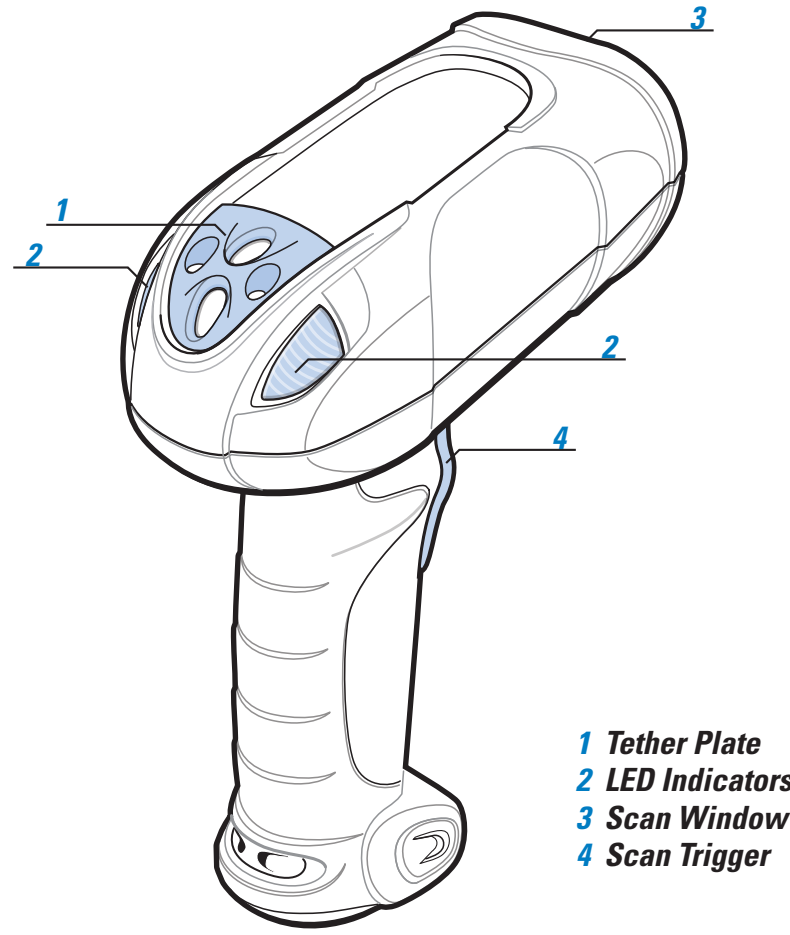


# DS3578 with FIPS

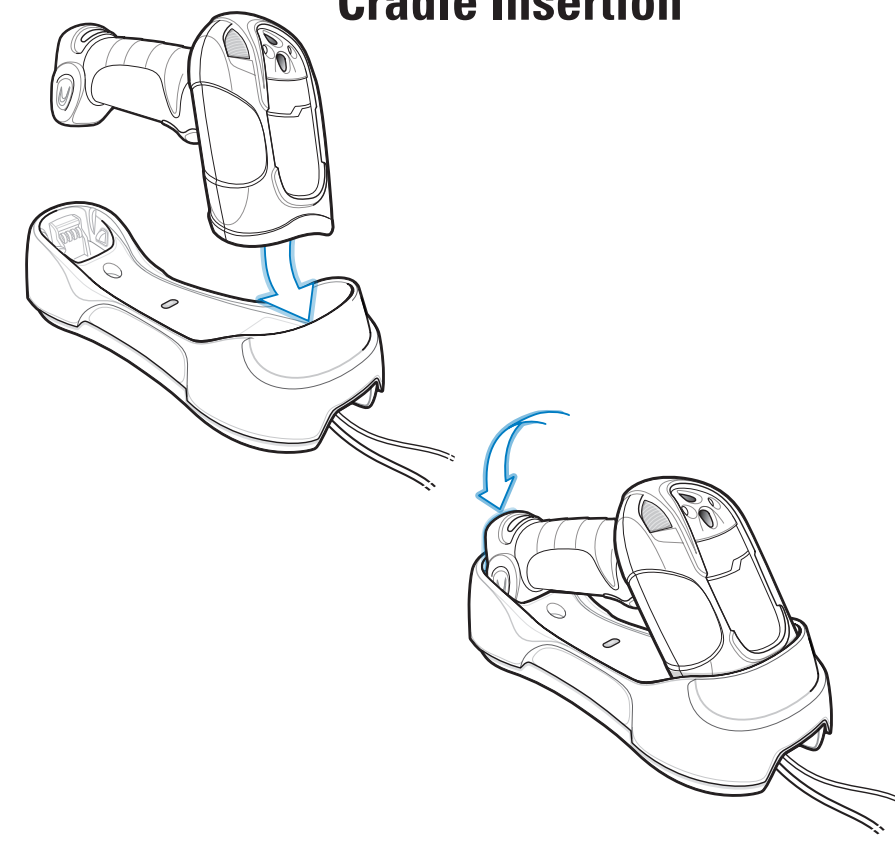
## Quick Start Guide

See Product Reference Guide for detailed information

POST IN WORK AREA

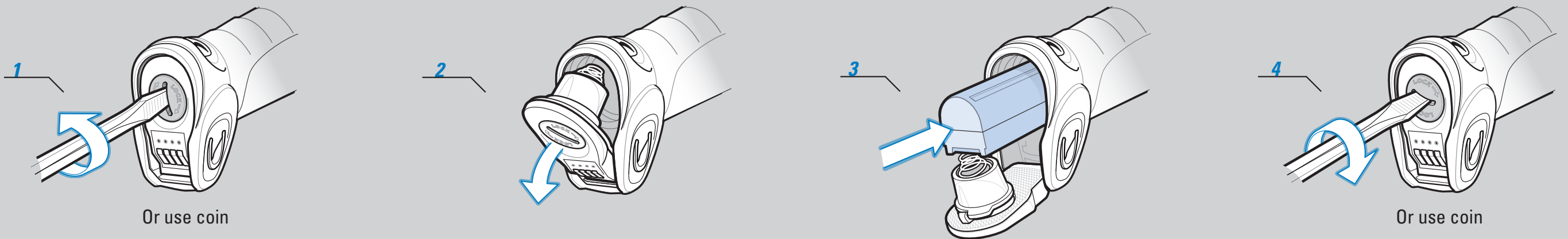


### Cradle Insertion

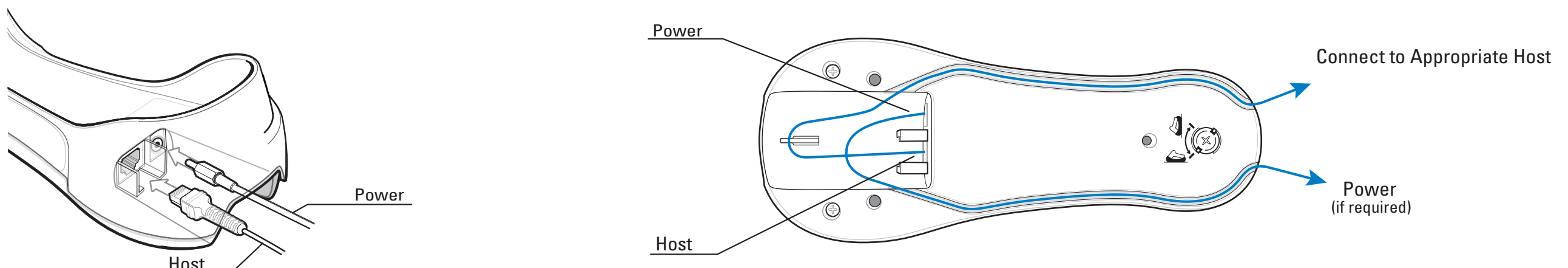


Caution: DS3478 cordless scanners are incompatible with STB3508/3578 cradles. DS3578 cordless scanners are incompatible with STB3408/3478 cradles.

## STEP 1 - BATTERY INSERTION/REMOVAL

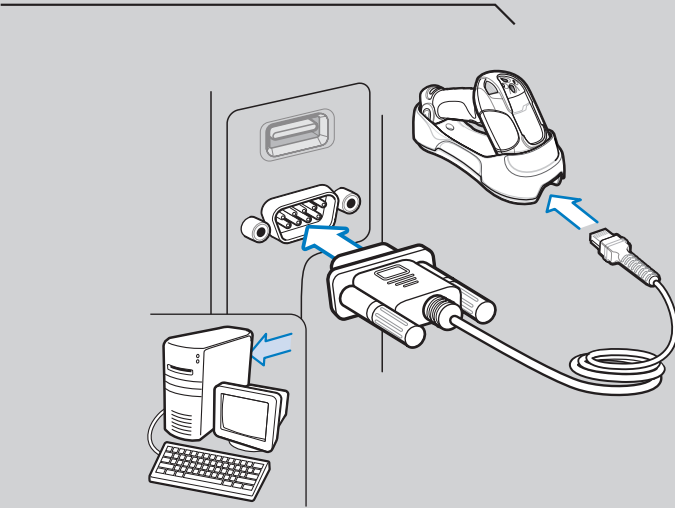


## STEP 2 - CRADLE CABLE CONNECTION



## STEP 3 - CONNECT HOST INTERFACE

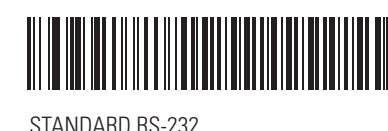
NOTE: Cables may vary depending on configuration



## STEP 4 - SET UP INTERFACE (Scan Host Bar Codes)

### RS-232

Scan *ONE* of the bar codes below



STANDARD RS-232



NIXDORF RS-232 MODE B



NIXDORF RS-232 MODE A



ICL RS-232

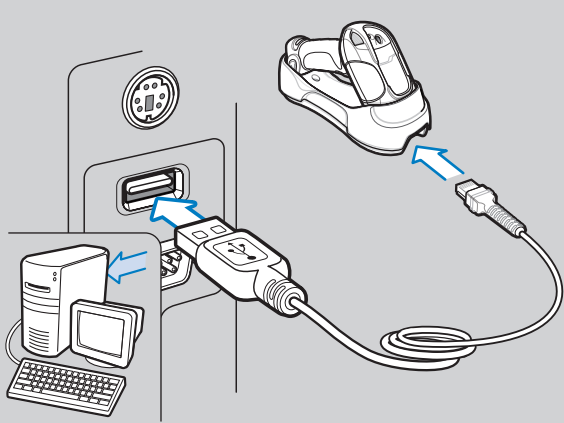


FUJITSU RS-232



OPOS/JPOS

### USB



### USB

Scan *ONE* of the bar codes below



HID KEYBOARD EMULATION



SNAPi WITH IMAGING  
(For use with hands-free base only)



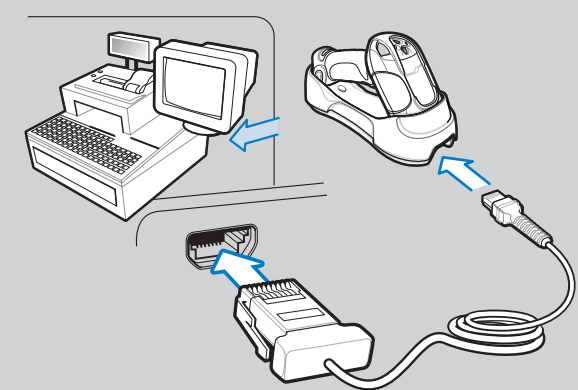
IBM HAND-HELD USB



SNAPi WITHOUT IMAGING  
(For use with hands-free base only)

NOTE: SNAPi is for use with FIPS enabled scanner and FIPS enabled cradle only.

### IBM 46XX



### IBM 46XX

Scan *ONE* of the bar codes below

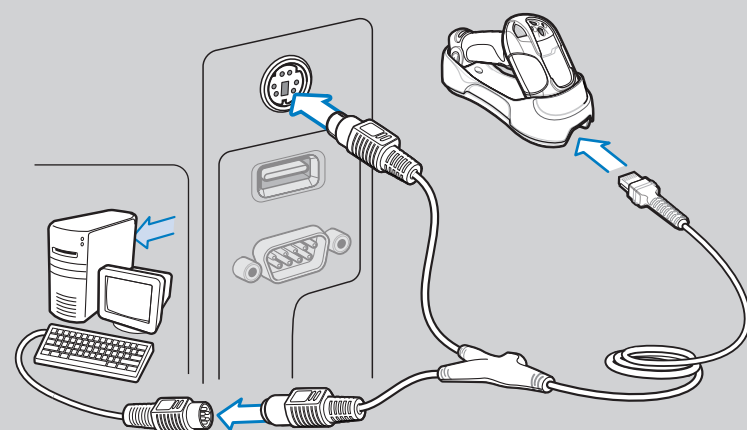


PORT 5B



PORT 9B

### Keyboard Wedge



### Keyboard Wedge

Scan bar codes below



IBM PC/AT and IBM PC COMPATIBLE

### 123SCAN2

123Scan<sup>2</sup> is an easy-to-use, PC-based software tool that enables rapid and easy customized setup via a bar code or USB cable. For more information, visit: <http://www.zebra.com/123Scan2>

## PROGRAMMING BAR CODES

### Set Defaults

Note: The scanner connection to the cradle is dissolved when Set Defaults is scanned.



SET DEFAULTS

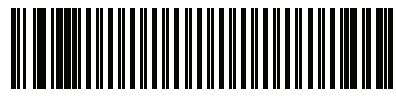


SCAN OPTIONS



<DATA><SUFFIX>

### Unpairing/Disconnection



UNPAIR/DISCONNECT



ENTER

### Radio Communications Host Types



CRADLE HOST



SERIAL PORT PROFILE (SLAVE)



BLUETOOTH KEYBOARD EMULATION (HID SLAVE)



SERIAL PORT PROFILE (MASTER)

## FIPS MODE

NOTE: Requires a FIPS enabled DS3578 scanner (DS3578-XXF005WR) and FIPS enabled cradle (STB/FLB3578-CF007WR).

### FIPS

Scan *ONE* of the bar codes below



Enable FIPS

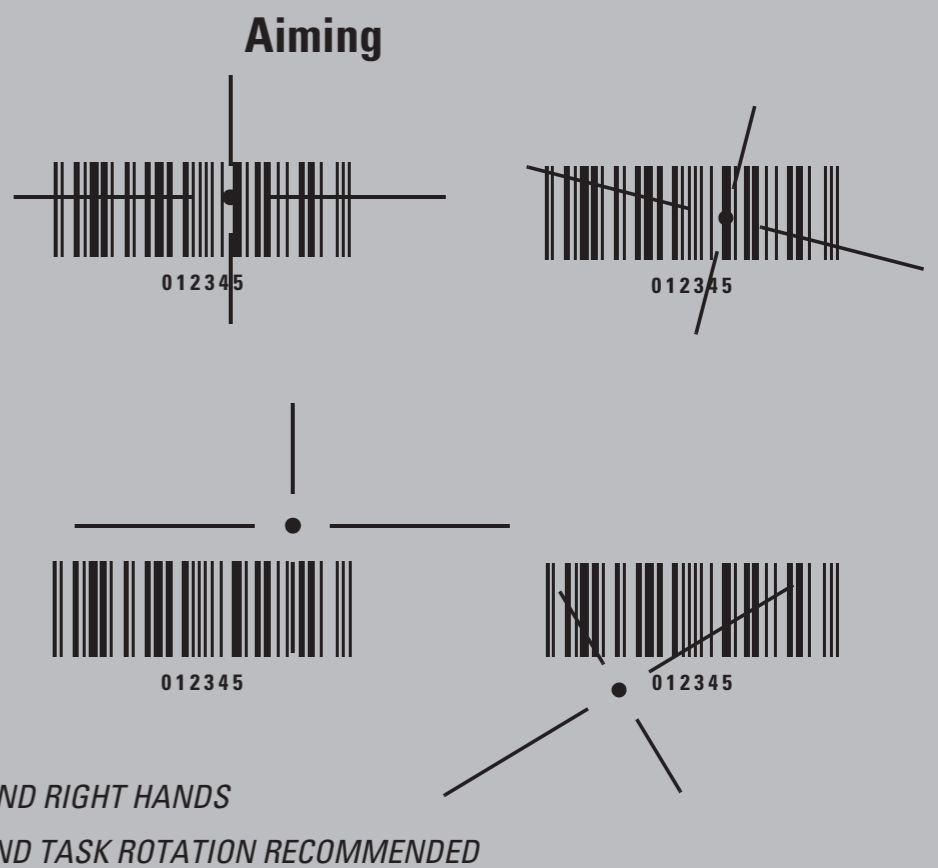
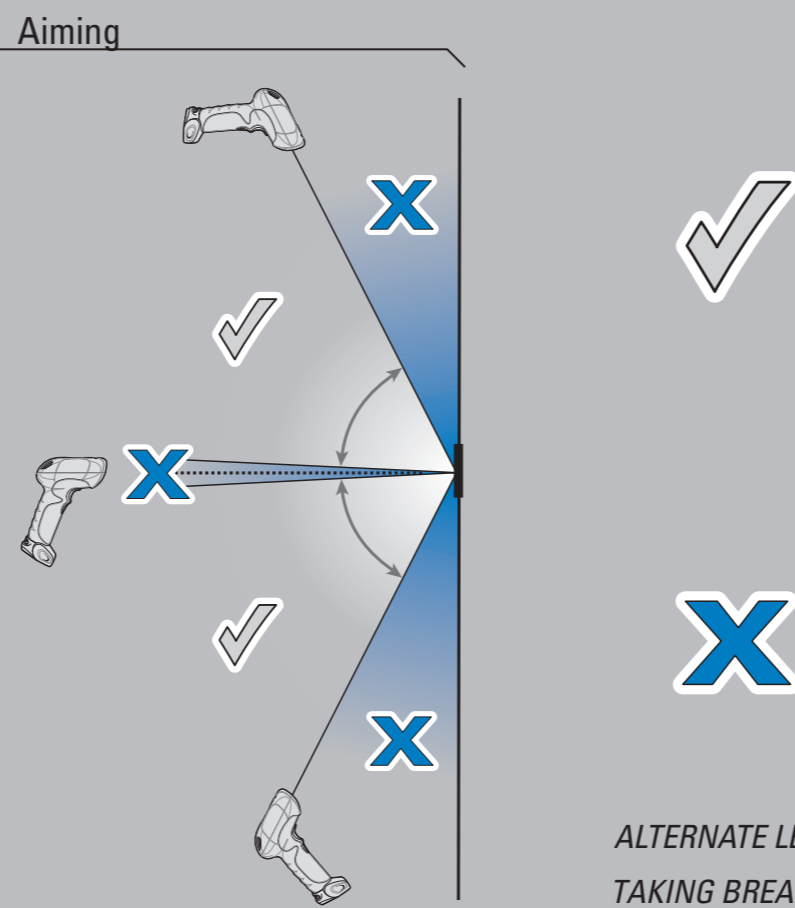
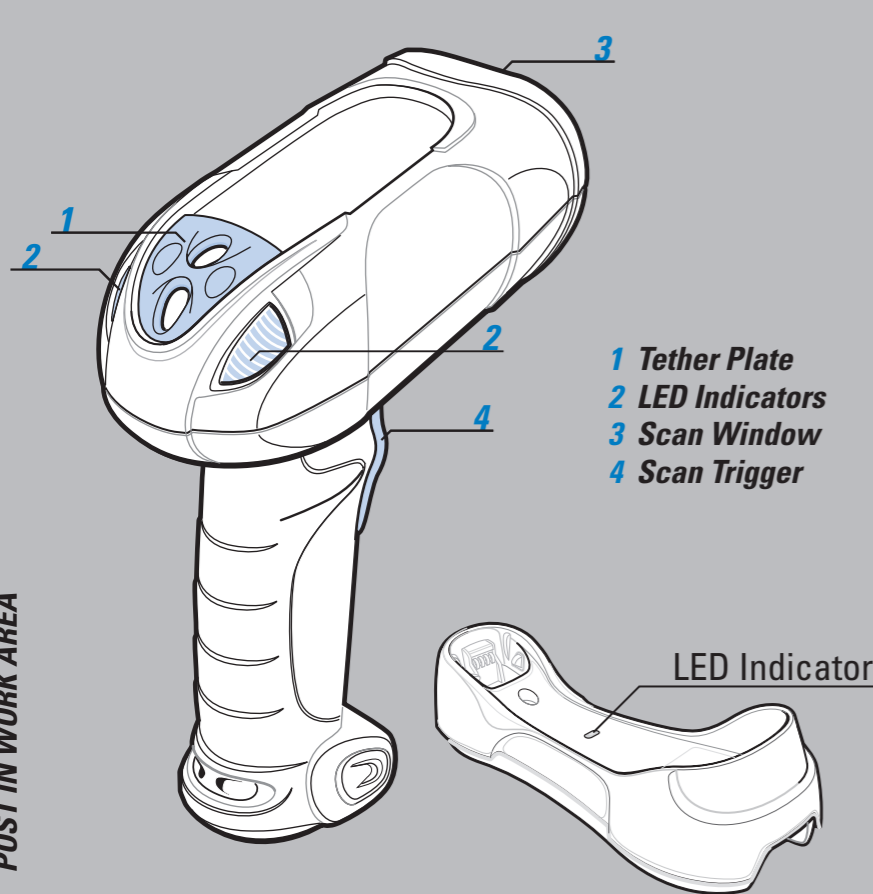


\*Disable FIPS

# DS3578 with FIPS

## Quick Start Guide

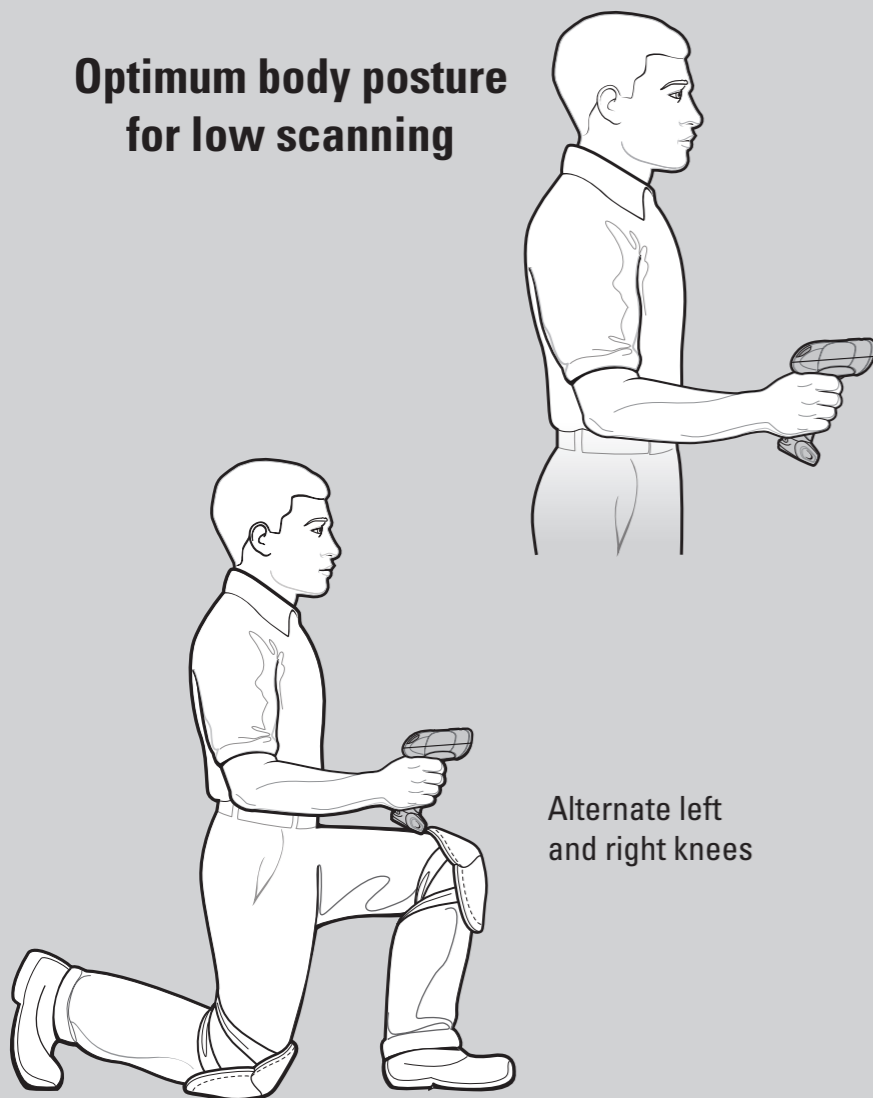
# OPTIMUM SCANNING POSITIONS



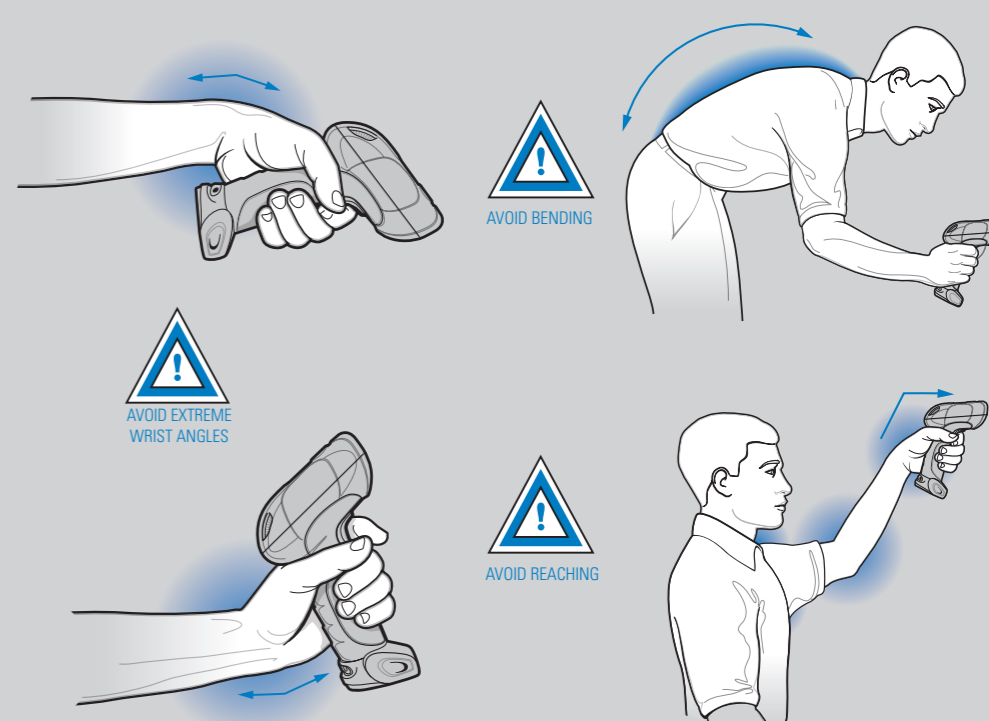
ALTERNATE LEFT AND RIGHT HANDS  
TAKING BREAKS AND TASK ROTATION RECOMMENDED

# OPTIMUM BODY POSTURE

## Optimum body posture for low scanning



## Optimum body posture for extended range scanning



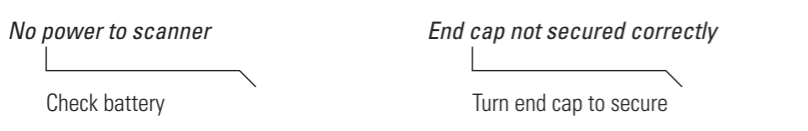
### Ergonomic Recommendations

- Caution:** In order to avoid or minimize the potential risk of ergonomic injury, follow the recommendations below. Consult with your local Health & Safety Manager to ensure that you are adhering to your company's safety programs to prevent employee injury.
- Reduce or eliminate repetitive motion
  - Reduce or eliminate vibration
  - Maintain a natural/neutral position
  - Reduce or eliminate direct pressure
  - Reduce or eliminate excessive force
  - Provide adjustable workstations
  - Keep objects that are used frequently within easy reach
  - Provide a suitable working environment
  - Perform tasks at correct heights
  - Improve work procedures

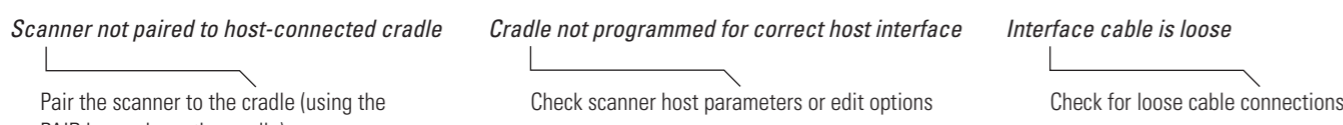
# TROUBLESHOOTING

Please refer to the DS3578 Product Reference Guide Troubleshooting section for further information.

### Scanner not working

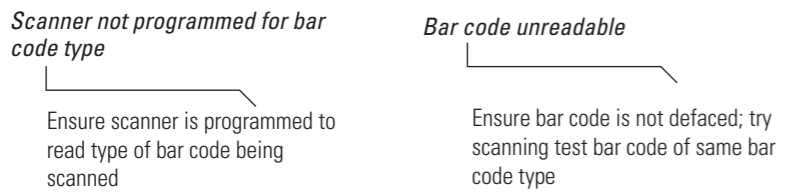


### Scanner decoding bar code, but data not transmitting to host

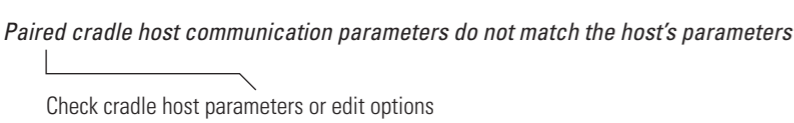


Note: If data is still not transmitting to host, it may be necessary to recycle power on the cradle.

### Scanner not decoding bar code

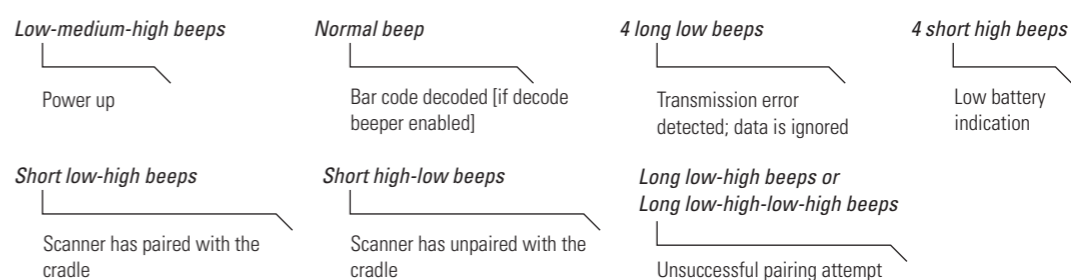


### Scanned data incorrectly displayed on host

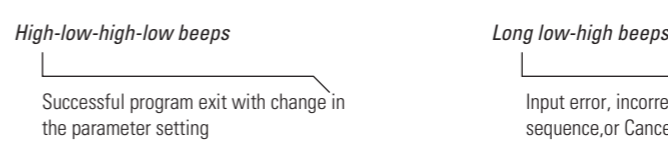


# BEEPER/LED INDICATIONS

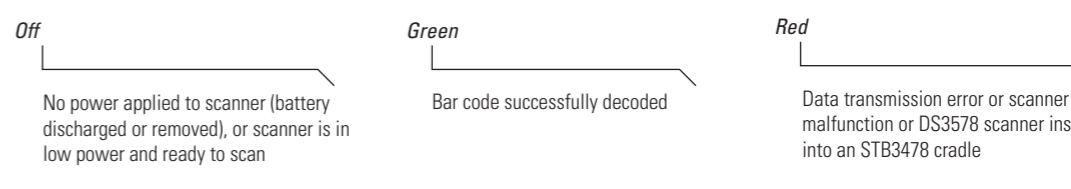
### Beeper Indications (Standard Use)



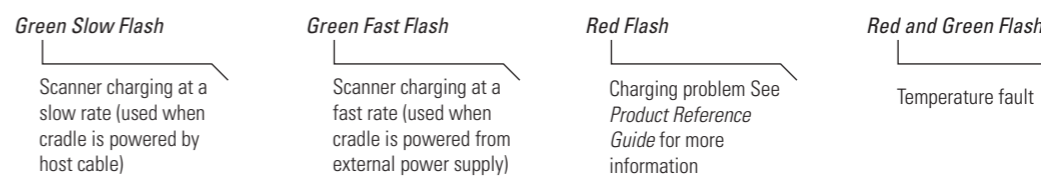
### Parameter Menu Scanning



### LED Indications (Standard Use)



### Charging Use



# DS3578 with FIPS

# REGULATORY INFORMATION

### Regulatory Information

This guide applies to Model Number DS3578 with FIPS. All Zebra devices are designed to be compliant with rules and regulations in locations they are sold and will be labeled as required. Local language translations are available at: <http://www.zebra.com/support>. Any changes or modifications to Zebra equipment, not expressly approved by Zebra, could void the user's authority to operate the equipment. Declared maximum operating temperature: 50°C.

### CAUTION:

Only use Zebra approved and UL Listed accessories, battery packs and battery chargers. Do NOT attempt to charge damp/wet batteries. All components must be dry before connecting to an external power source.

### Waste Electrical and Electronic Equipment (WEEE)

**English:** For EU Customers: All products at the end of their life must be recycled. For information on how to return product, please go to: <http://www.zebra.com/wEEE>.  
**Deutsch:** Zu dem Ende des Lebenszyklus von Produkten, die Sie unter <http://www.zebra.com/wEEE>.  
**Čeština:** Pro zakázky z EU: Všechny produkty je nutné po skončení jejich životnosti vrátit společnosti Zebra na recyklaci. Informace o způsobu vrácení produktu najdete na webové stránce: <http://www.zebra.com/wEEE>.  
**Гарэск:** Толькі для кліентаў з ЕС: Усе прадукты павінны быць перададзены на перапрацоўку ў канцы іхнаго жыцця. Інфармацыя аб тым, як перадаць прадукт, знайдзіце на нашым сайце: <http://www.zebra.com/wEEE>.  
**Ελληνικά:** Για τους πελάτες της Ε.Ε.: Όλα τα προϊόντα, στο τέλος της ζωής τους, πρέπει να απορριφθούν στην Zebra για επανακύλιση. Για πληροφορίες σχετικά με τον τρόπο επιστροφής του προϊόντος, επισκεφθείτε τη διεύθυνση <http://www.zebra.com/wEEE>.  
**Български:** За всички клиенти от ЕС: Всички продукти трябва да се върнат на Zebra за рециклиране. За повече информация относно това как да върнете продукта, посетете: <http://www.zebra.com/wEEE>.  
**Εσπεράντο:** Poris klienti en la Unio Europeja: todos los productos deberán entregarse a Zebra al final de su ciclo de vida para que sean reciclados. Si desea más información sobre cómo devolver un producto, visite: <http://www.zebra.com/wEEE>.  
**Francia:** Clients de l'Union Européenne: Tous les produits en fin de cycle de vie doivent être retournés à Zebra pour recyclage. Pour de plus amples informations sur le retour de produits, consultez: <http://www.zebra.com/wEEE>.  
**Italiano:** Per i clienti dell'UE: tutti i prodotti che sono giunti al termine del rispettivo ciclo di vita devono essere restituiti a Zebra al fine di consentirne il riciclaggio. Per informazioni sulla modalità di restituzione, visitate il seguente sito Web: <http://www.zebra.com/wEEE>.  
**Latviešu:** Lai klientiem no ES: Visus produktus jāatgriež uz Zebra, lai tie būtu pārstrādāti. Lai iegūtu informāciju par produktu nogādāšanu Zebra, lūdz: skatīt: <http://www.zebra.com/wEEE>.

**Latviešu:** ES vartotājiem: visus produktus jāatgriež uz Zebra, lai tie būtu pārstrādāti. Lai iegūtu informāciju par produktu nogādāšanu Zebra, lūdz: skatīt: <http://www.zebra.com/wEEE>.  
**Magyar:** Az EU-ban vásároltók: Minden termékemet kizárólag Zebra vállalatához kell eljuttatni újrahasznosítás céljából. A termék visszavételéről további információkat tudhat meg a <http://www.zebra.com/wEEE> weboldalon.  
**Malay:** Untuk pelanggan di E.U.: Semua produk yang telah selesai digunakan harus dikembalikan ke Zebra untuk diolah. Untuk mengetahui lebih lanjut mengenai hal tersebut, kunjungi: <http://www.zebra.com/wEEE>.  
**Nederlands:** Voor klanten in de EU: alle producten dienen aan het einde van hun levensduur naar Zebra te worden teruggezonden voor recycling. Raadpleeg <http://www.zebra.com/wEEE> voor meer informatie over het teruggeven van producten.  
**Polish:** Klienci z obszaru Unii Europejskiej: Produkty wydane z eksploatacją należy zwrócić do firmy Zebra w celu ich recyklingu. Informacje na temat zwrotu produktów znajdą Państwo na stronie internetowej: <http://www.zebra.com/wEEE>.  
**Português:** Para clientes da UE: todos os produtos no fim de vida devem ser devolvidos à Zebra para reciclagem. Para obter informações sobre como devolver o produto, visite: <http://www.zebra.com/wEEE>.  
**Română:** Pentru clienți din UE: Toate produsele, la sfârșitul duratei lor de funcționare, trebuie returnate la Zebra pentru reciclare. Pentru informații despre returnarea produsului, accesați: <http://www.zebra.com/wEEE>.  
**Slovenščina:** Pri zakaznikih iz EU: Vse proizvode, ki so prišli na dan, ko jih ne uporabljamo več, je potrebno vrnilo nazaj na Zebra, da bi jih lahko reciklirali. Za informacije o vračilu izdelka obiščite: <http://www.zebra.com/wEEE>.  
**Svenska:** Användare i Europa: Alla produkter som tagits i bruk ska återlämnas till Zebra för återvinning. För mer information om hur du återlämnar produkten, gå till: <http://www.zebra.com/wEEE>.  
**Türkçe:** AB ülkelerinden: Kullanılan tüm cihazları (son kullanıma kadar) geri döndürmek için lütfen firmaya yazarak: <http://www.zebra.com/wEEE>.

### RF Exposure Guidelines

#### Safety Information

#### Reducing RF Exposure – Use Properly

Only operate the device in accordance with the instructions supplied.

#### International

The device complies with internationally recognized standards covering human exposure to electromagnetic fields from radio devices. For information on "International" human exposure to electromagnetic fields refer to the Zebra Declaration of Conformity (DoC) at: <http://www.zebra.com/doc>.

#### EU - Handheld Devices

To comply with EU RF exposure requirements, this device must be operated in the hand with a minimum separation distance of 20cm or more from a person's body. Other operating configurations should be avoided.

#### US and Canada - Handheld Devices

To comply with FCC RF exposure requirements, this device must be operated in the hand with a minimum separation distance of 20 cm or more from a person's body. Other operating configurations should be avoided.

### Batteries

#### Taiwan - Recycling



「廢電池請回收」

EPA (Environmental Protection Administration) requires dry battery production or importing firms in accordance with Article 15 of the Waste Disposal Act are required to indicate the recycling marks on the batteries used in sales, giveaway or promotion. Contact a qualified Taiwanese recycler for proper battery disposal.

#### Battery Information

Zebra rechargeable battery packs are designed and constructed to the highest standards within the industry. However, there are limitations to how long a battery can operate or be stored before needing replacement. Many factors affect the actual life cycle of a battery pack, such as heat, cold, harsh environmental conditions and severe drops.

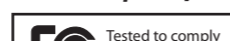
When batteries are stored over six (6) months, some irreversible deterioration in overall battery quality may occur. Store batteries at half of full charge in a dry, cool place, removed from the equipment to prevent loss of capacity, rusting of metallic parts and electrolyte leakage. When storing batteries for one year or longer, the charge level should be verified at least once a year and charged to half of full charge.

Replace the battery when a significant loss of run time is detected. Standard warranty period for all Zebra batteries is 12 months, regardless if the battery was purchased separately or included as part of the mobile computer or bar code scanner.

#### Battery Safety Guidelines

- The area in which the units are charged should be clear of debris and combustible materials or chemicals. Particular care should be taken where the device is charged in a non-commercial environment.
- Follow battery usage, storage, and charging guidelines found in the user's guide.
- Improper battery use may result in a fire, explosion, or other hazard.
- To charge the mobile device battery, the battery and charger temperatures must be between +32° F and +104° F (0° C and +40° C).
- Do not use incompatible batteries and chargers. Use of an incompatible battery or charger may present a risk of fire, explosion, leakage, or other hazard. If you have any questions about the compatibility of a battery or a charger, contact Zebra support.
- For devices that utilize a USB port as a charging source, the device shall only be connected to products that bear the USB-IF logo or have completed the USB-IF compliance program.
- Do not disassemble or open, crush, bend or deform, puncture, or shred.
- Severe impact from dropping any battery-operated device on a hard surface could cause the battery to overheat.
- Do not short circuit a battery, or allow metallic or conductive objects to contact the battery terminals.
- Do not modify or remanufacture, attempt to insert foreign objects into the battery, immerse or expose to water or other liquids, or expose to fire, explosion, or other hazard.
- Do not leave or store the equipment in or near areas that might get very hot, such as in a parked vehicle or near a radiator or other heat source. Do not place battery into a microwave oven or dryer.
- Battery usage by children should be supervised.
- Please follow local regulations to promptly dispose of used re-chargeable batteries.
- Do not dispose of batteries in fire.
- Seek medical advice immediately if a battery has been swallowed.
- In the event of a battery leak, do not allow the liquid to come in contact with the skin or eyes. If contact has been made, wash the affected area with large amounts of water and seek medical advice.
- If you suspect damage to your equipment or battery, contact Zebra support to arrange for inspection.

### Radio Frequency Interference Requirements - FCC



Tested to comply with FCC standards for HOME OR OFFICE USE.

Note: This equipment has been tested and found to comply with the limits for a Class B digital device, pursuant to Part 15 of the FCC rules. These limits are designed to provide protection against harmful interference in a residential installation. This equipment generates, uses and can radiate radio frequency energy and, if not installed and used in accordance with the instructions, may cause harmful interference to radio communications. However, there is no guarantee that interference will not occur in a particular installation. If this equipment does cause harmful interference to radio or television reception, which can be determined by turning the equipment off and on, the user is encouraged to try to correct the interference by one or more of the following measures:

- Reorient or relocate the receiving antenna
- Increase the separation between the equipment and receiver
- Connect the equipment into an outlet on a circuit different from that to which the receiver is connected
- Consult the dealer or an experienced radio/TV technician for help

### © 2015 Symbol Technologies, Inc.

Zebra reserves the right to make changes to any product to improve reliability, function, or design. Zebra does not assume any product liability arising out of, or in connection with, the application or use of any product, circuit, or application described herein. No license is granted, either expressly or by implication, estoppel, or otherwise under any patent right or patent, covering or relating to any combination, system, apparatus, machine, material, method, or process in which Zebra products might be used. An implied license exists only for equipment, circuits, and subsystems contained in Zebra products.

This Zebra Product may include Zebra Software, Commercial Third Party Software, and Publicly Available software. Refer to Product Reference Guide for complete copyright, conditions and disclaimer information.

### Radio Transmitters (Part 15)

This device complies with Part 15 of the FCC Rules. Operation is subject to the following two conditions: (1) this device may not cause harmful interference, and (2) this device must accept any interference received, including interference that may cause undesired operation.

### Radio Frequency Interference Requirements – Canada

This Class B digital apparatus complies with Canadian ICES-003. Cet appareil numérique de la classe B est conforme à la norme NMB-003 du Canada.

### Marking and European Economic Area (EEA)

Bluetooth® Wireless Technology for use through the EEA has the following restrictions:  
• Maximum radiated transmit power of 100mW EIRP in the frequency range 2.400 - 2.4835 GHz

### Stat Statement of Compliance

Zebra hereby, declares that this device is in compliance with the essential requirements and other relevant provisions of Directives 1995/5/EC and 2011/65/EU. Declaration of Conformities may be obtained from <http://www.zebra.com/doc>.

### Japan (VCCI) - Voluntary Control Council for Interference

この装置は、情報処理装置等電波障害自主規制協議会 (V C C I) の基準に基づいた電波技術装置です。この装置は、家庭環境で使用することを目的としていますが、この装置がラジオやテレビジョン受信機に近接して使用されると、受信障害を引き起こすことがあります。取扱説明書に従って正しい取り扱い方をしてください。 This is a Class B product based on the standard of the Voluntary Control Council for Interference from Information Technology Equipment (VCCI). If this is used near a radio or television receiver in a domestic environment, it may cause radio interference. Install and use the equipment according to the instruction manual.

### Korean Warning Statement for Class B ITE

기종별	사용자안내문
B급 기기 (가정용 방송통신기기)	이 기기는 가정용(B급)으로 전자과적합등록을 한 기기로서 주로 가정에서 사용하는 것을 목적으로 하며, 모든 지역에서 사용할 수 있습니다.

### Other Countries

#### Declarações Regulamentares para DS3578 BRAZIL

NOTA: A marca de certificação se aplica ao Equip. de Radiação Restrita, modelo DS3578. Este equipamento opera em caráter secundário, isto é, não tem direito a proteção contra interferência prejudicial, mesmo de estações do mesmo tipo, e não pode causar interferência a sistemas operando em caráter primário. Para maiores consultas sobre ANATEL consulte o site: [www.anatel.gov.br](http://www.anatel.gov.br)

#### CHILE

"Este equipo cumple con la Resolución N 403 de 2008, de la Subsecretaría de telecomunicaciones, relativa a radiaciones electromagnéticas."

#### China



#### Taiwan

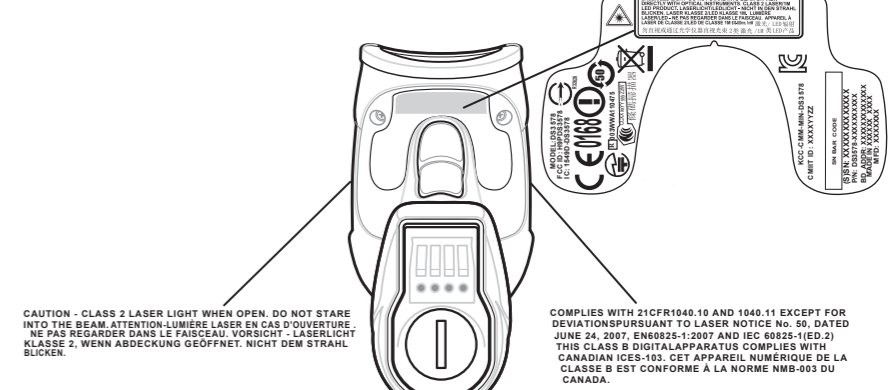
臺灣 臺灣 低功率電波輻射性電機管理辦法 第十二條 經型式認證合格之低功率射頻電機，非經許可，公司、商號或使用者均不得擅自變更頻率、加大功率或變更原設計之特性及功能。 第十四條 低功率射頻電機之使用不得影響飛航安全及干擾合法通信；經發現有干擾現象時，應立即停用，並改善至無干擾時方得繼續使用。 前項合法通信，指依電信規定作業之無線電通信。 低功率射頻電機須忍受合法通信或工業、科學及醫療用電波輻射性電機設備之干擾。

#### Korea

For a radio equipment using 2400-2483.5MHz or 5725-5825MHz, the following two expression should be displayed; 당해 무선설비는 운용 전파혼신 가능성이 있음 당해 무선설비는 전파혼신 가능성이 있으므로 인명안전과 관련된 서비스는 할 수 없습니다. Restrict Frequency Range to: 2.450 - 2.4835 GHz.

### Laser Devices

Complies with 21CFR104.10 and 1040.11 except for deviations pursuant to Laser Notice No. 50, June 24, 2007 and EN60825-1:2007 and IEC 60825-1:ED.2. The laser classification is marked on one of the labels on the device. Class 1 Laser devices are not considered to be hazardous when used for their intended purpose. The following statement is required to comply with US and international regulations: Caution: Use of controls, adjustments or performance of procedures other than those specified herein may result in hazardous laser light exposure. Class 2 laser scanners use a low power, visible light diode. As with any very bright light source, such as the sun, the user should avoid staring directly into the light beam. Momentary exposure to a Class 2 laser is not known to be harmful.



Zebra Technologies Corporation • Lincolnshire, IL U.S.A.  
Zebra and the Zebra head graphic are registered trademarks of ZIH Corp. The Symbol logo is a registered trademark of Symbol Technologies, Inc., a Zebra Technologies company. © 2015 Symbol Technologies, Inc.



72-151247-03 Revision A March 2015

