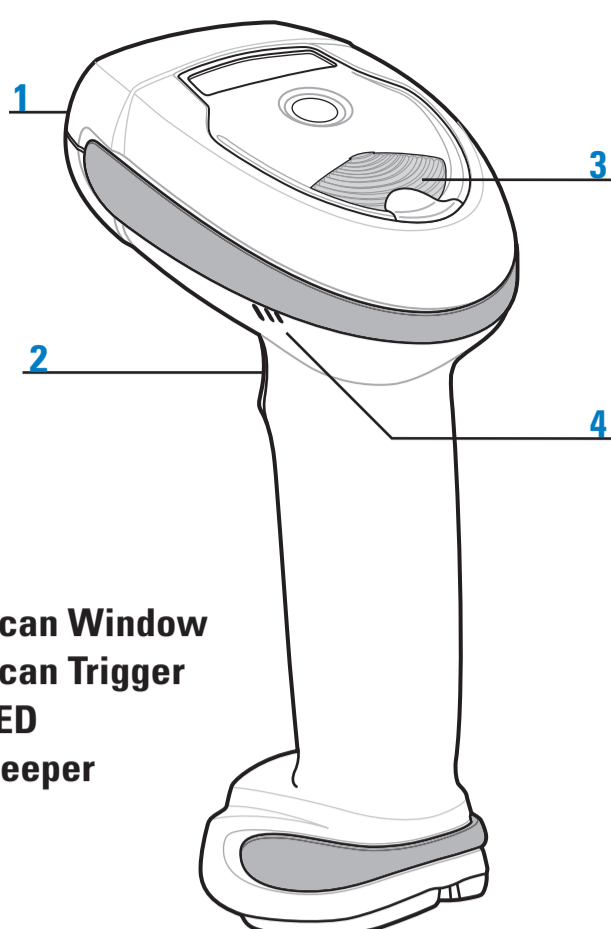
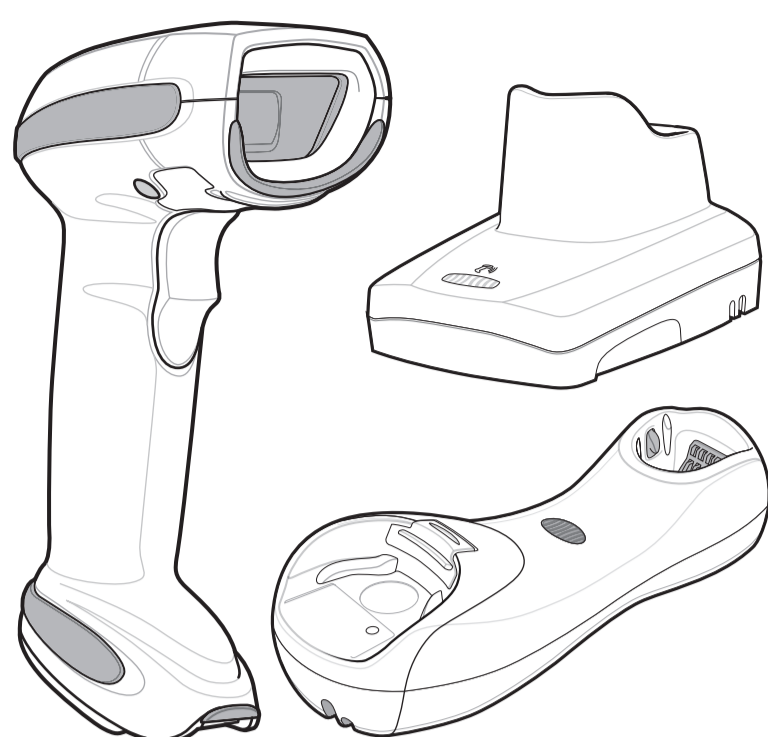


# LI4278 LINEAR IMAGER QUICK START GUIDE

<http://www.zebra.com/li4278>

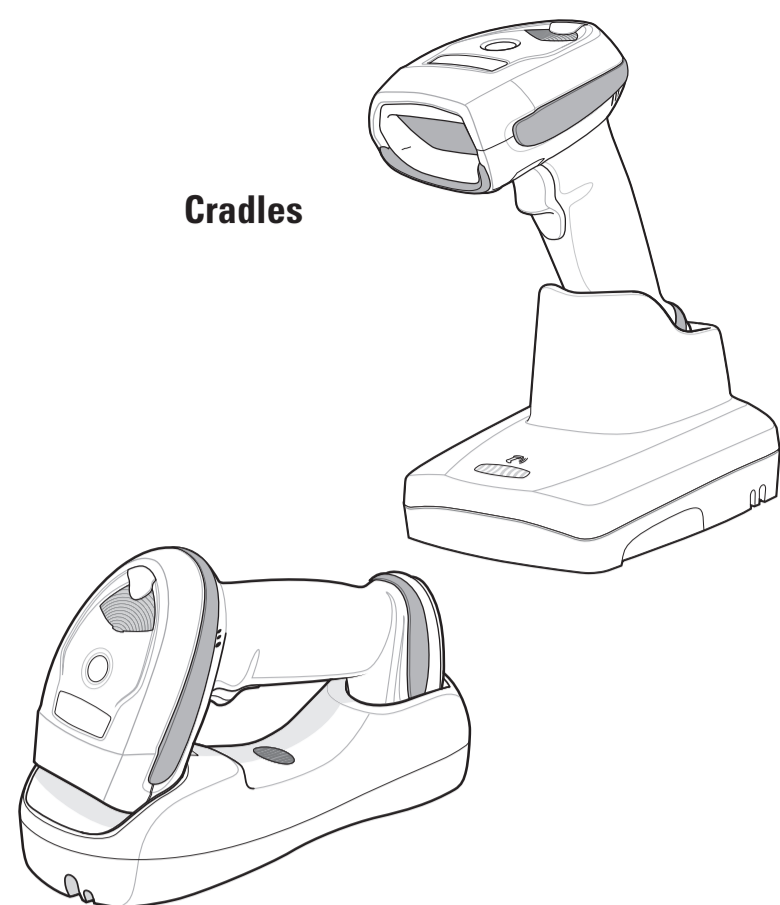
See Product Reference Guide for detailed information

POST IN WORK AREA



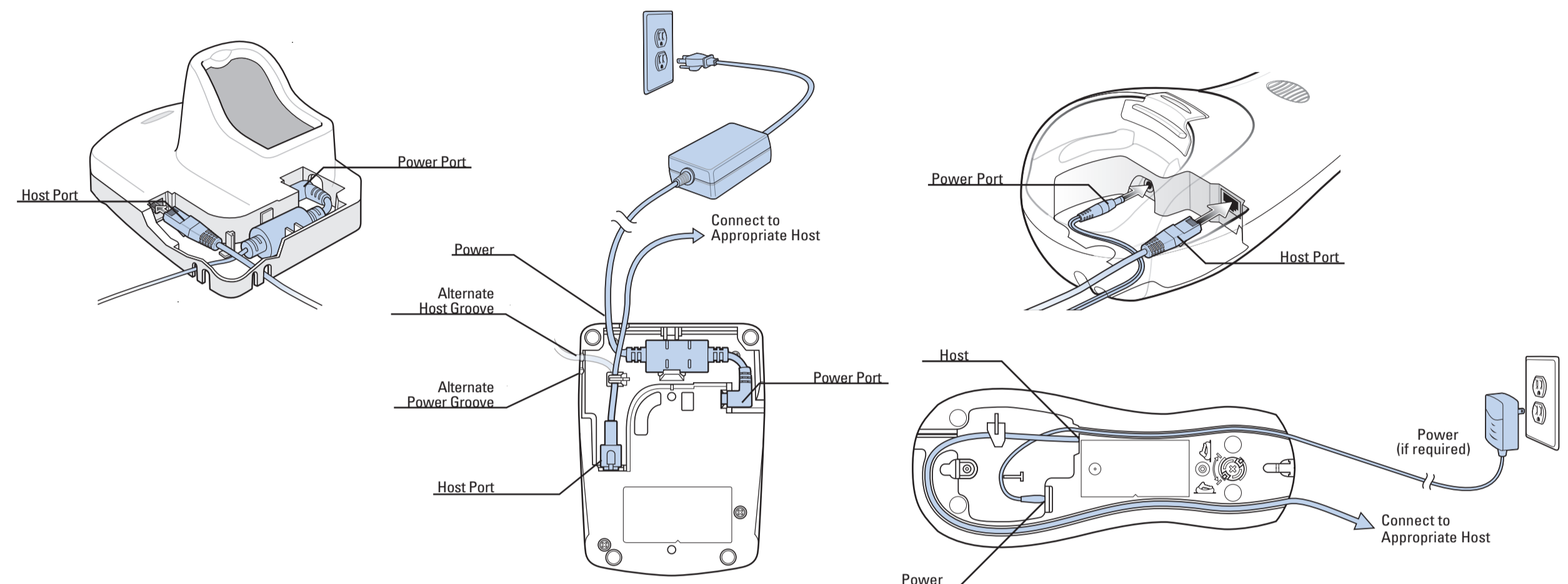
- 1 Scan Window
- 2 Scan Trigger
- 3 LED
- 4 Beeper

## Cradles



Refer to the LI4278 Product Reference Guide, or the cradle Quick Reference Guides for detailed information about cradle setup. When charging, use the cradle power supply for faster charge time.

## STEP 1 - CRADLE CABLE CONNECTIONS

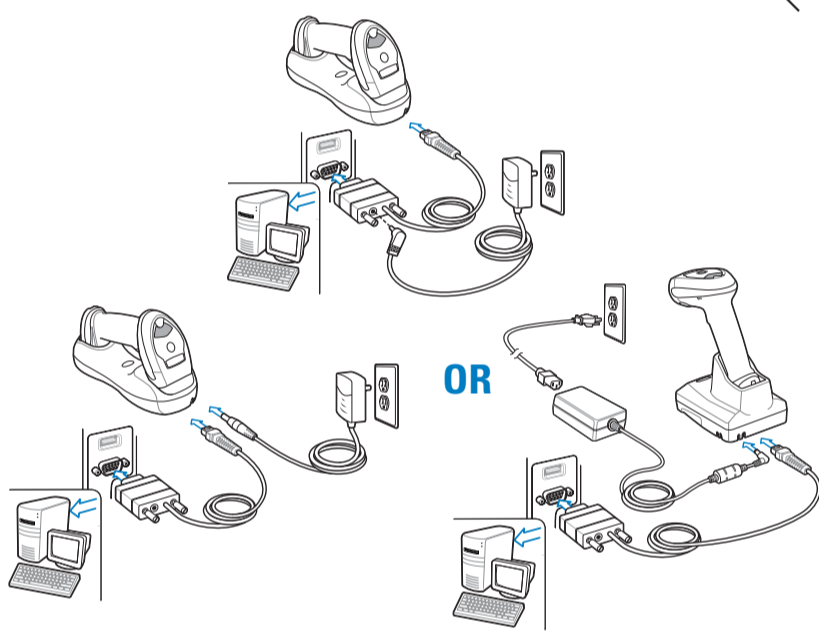


**Important:** Charge the linear imager scanner for 24 hours before the first full day of use.

## STEP 2 - CONNECT HOST INTERFACE

NOTE: Cables may vary depending on configuration

### RS-232



## STEP 3 - SET UP INTERFACE (Scan Host Bar Codes)

**RS-232**  
Scan **ONE** of the bar codes below



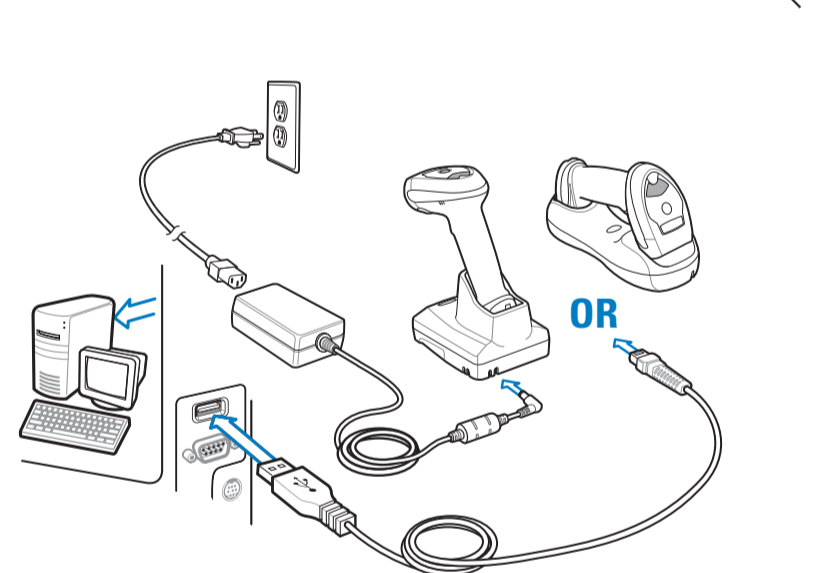
## STEP 4 - RADIO COMM HOST TYPES

### Radio Communications Host Types

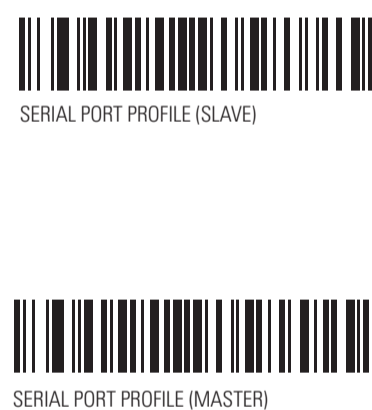
Scan a bar code below to choose how the scanner connects to a remote device. Scan **CRADLE HOST** if connecting to the CR0078 cradle. Refer to the *Product Reference Guide* for detailed information.



### USB



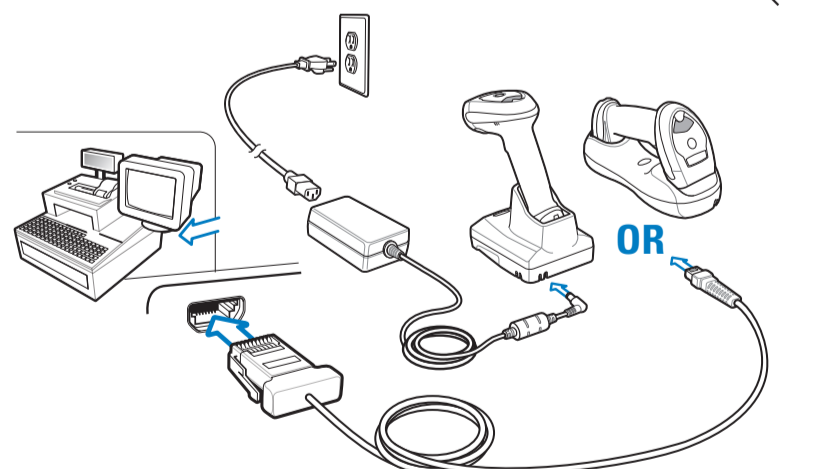
**USB**  
Scan **ONE** of the bar codes below



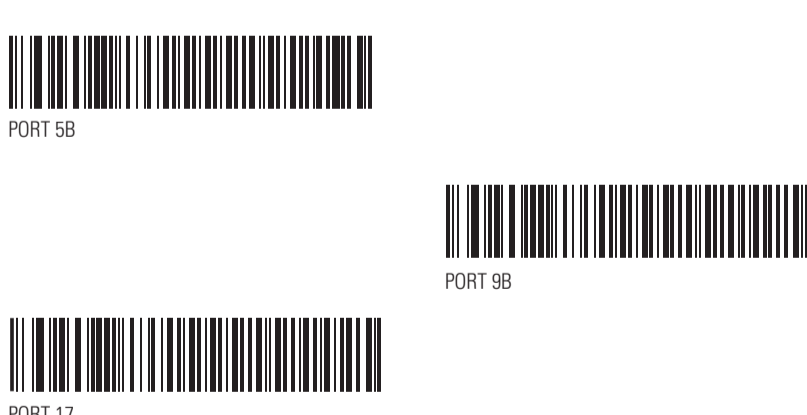
### Unpairing/Disconnection



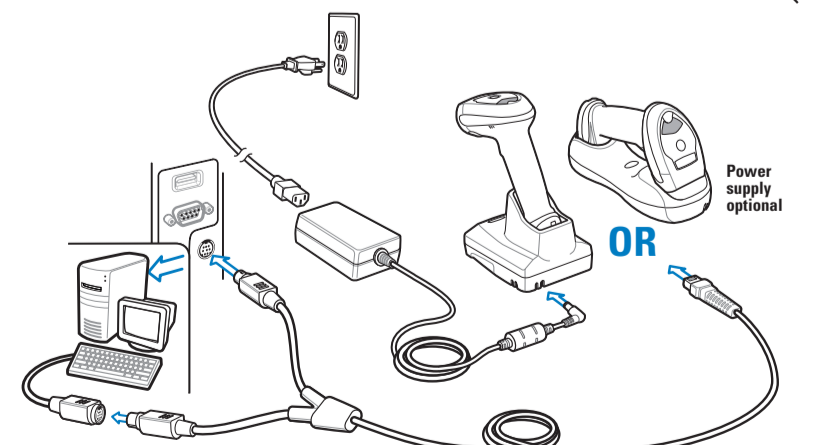
### IBM 46XX



**IBM 46XX**  
Scan **ONE** of the bar codes below



### Keyboard Wedge



**Keyboard Wedge**  
Scan bar code below



## HELPFUL BAR CODES

### SET DEFAULTS



RETURN TO FACTORY DEFAULTS

### BATTERY OFF



BATTERY OFF FOR LONG TERM STORAGE/SHIPPING

## 123SCAN<sup>2</sup>

123Scan<sup>2</sup> is an easy-to-use, PC-based software tool that enables rapid and easy customized setup via a bar code or USB cable. For more information, visit: <http://www.zebra.com/123Scan2>.

