

DS9808

Quick Start Guide

ACCESSORIES

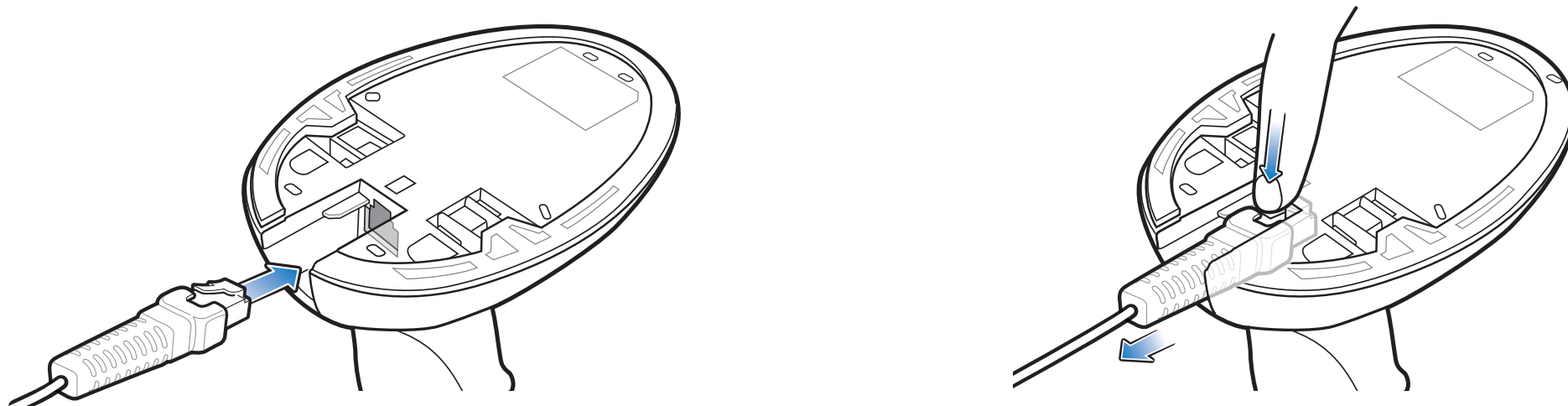
<http://www.zebra.com/ds9808>

See Product Reference Guide for detailed information

POST IN WORK AREA



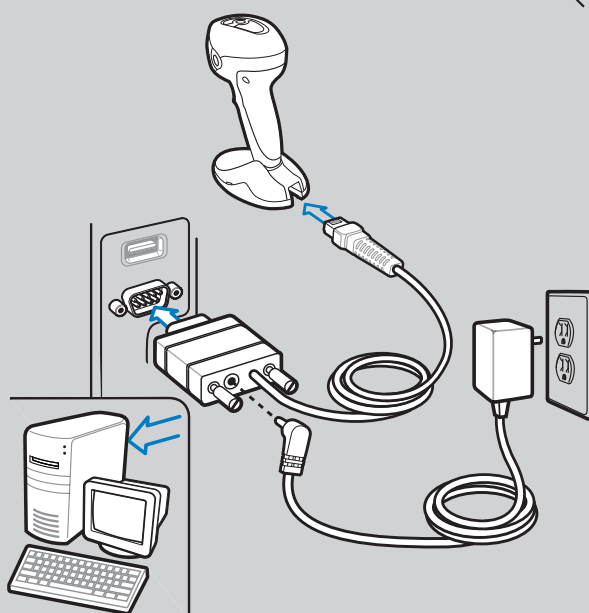
CORD ATTACHMENT/REMOVAL



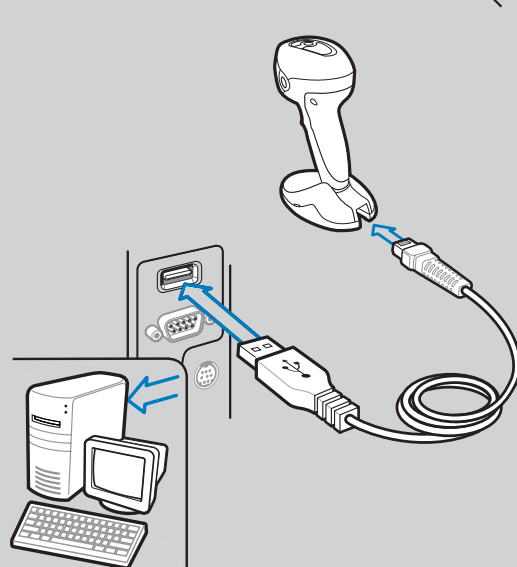
HOST INTERFACES

NOTE: Cables may vary depending on configuration

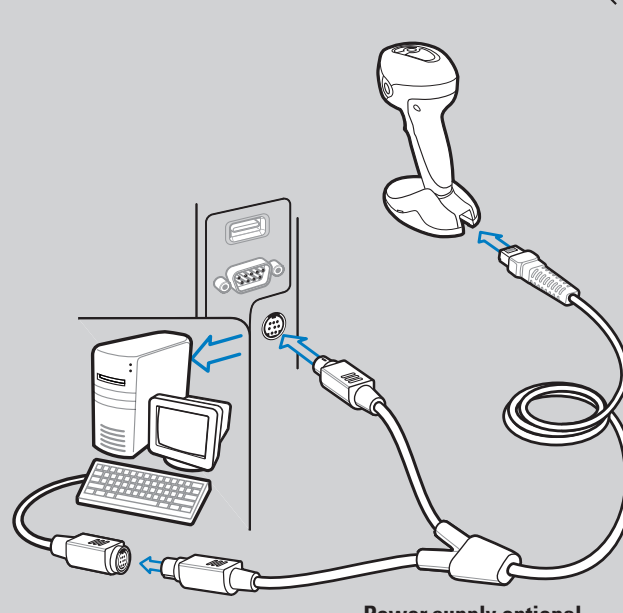
RS-232



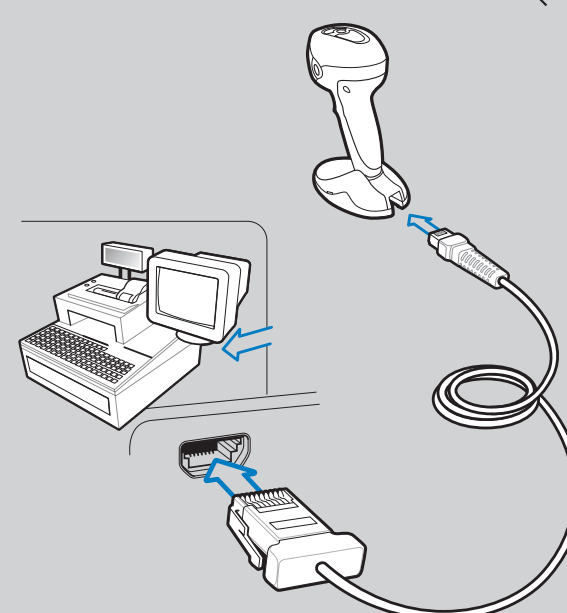
USB



Keyboard Wedge



IBM 46XX



TROUBLESHOOTING

Scanner not working

No power to scanner

Check system power; ensure power supply, if required, is connected

Incorrect interface cable used

Ensure that correct interface cable is used

Interface/power cables are loose

Ensure all cable connections are secure

Scanner not decoding bar code

Scanner not programmed for bar code type

Ensure scanner is programmed to read type of bar code being scanned

Bar code unreadable

Ensure bar code is not defaced; try scanning test bar code of same bar code type

Distance between scanner and bar code incorrect

Move scanner closer to or further from bar code

Scanner decoding bar code, but data not transmitting to host

Scanner not programmed for correct host interface

Scan appropriate host parameter bar codes

Interface cable is loose

Ensure all cable connections are secure

Scanned data incorrectly displayed on host

Scanner not programmed for correct host interface

Scan appropriate host parameter bar codes

DS9808 PROGRAMMING BAR CODES

Set Defaults



SET DEFAULTS

Enne Feed



<DATA><SUFFIX 1>

IBM 46XX Host Types



PORT 5B



PORT 9B

USB Host Types



HID KEYBOARD EMULATION



SNAP! WITH IMAGING

Keyboard Wedge Host Types



IBM PC/AT and IBM PC COMPATIBLE



PORT 17



IBM HAND-HELD USB



SNAP! WITHOUT IMAGING

Scan ONE of the following country types



NORTH AMERICAN



ITALIAN

RS-232 Host Types



STANDARD RS-232



NIXDORF RS-232 MODE B



FRENCH



SWEDISH



ICL RS-232



FUJITSU RS-232



FRENCH CANADIAN



UK ENGLISH



NIXDORF RS-232 MODE A



OPOS/JPOS



GERMAN



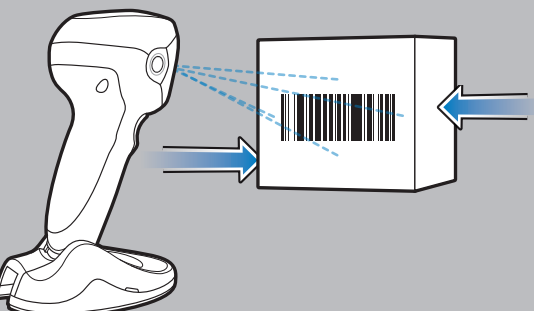
JAPANESE



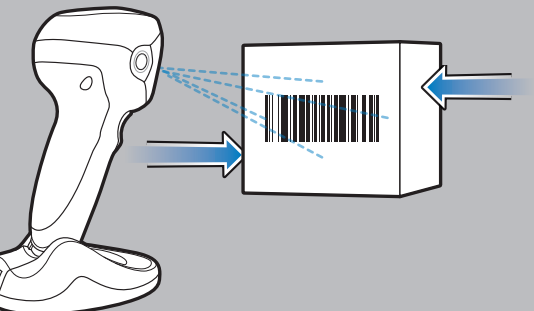
SPANISH

Hands-Free Scanning

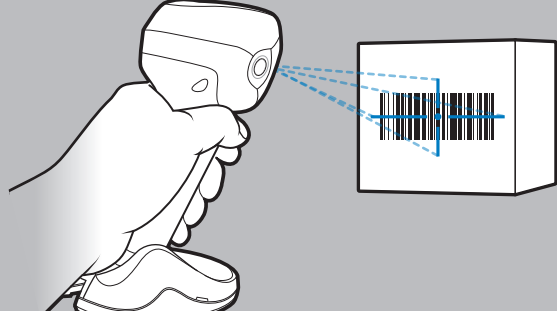
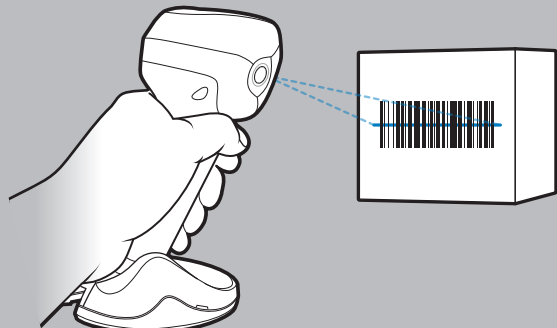
DS9808-LR



DS9808-SR



Hand-Held Scanning



DS9808-LR



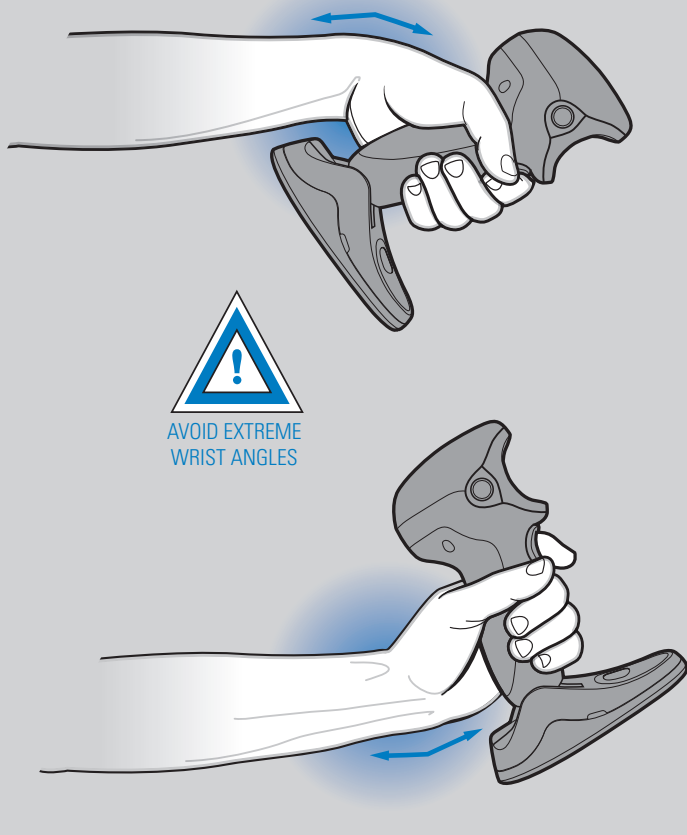
DS9808-SR



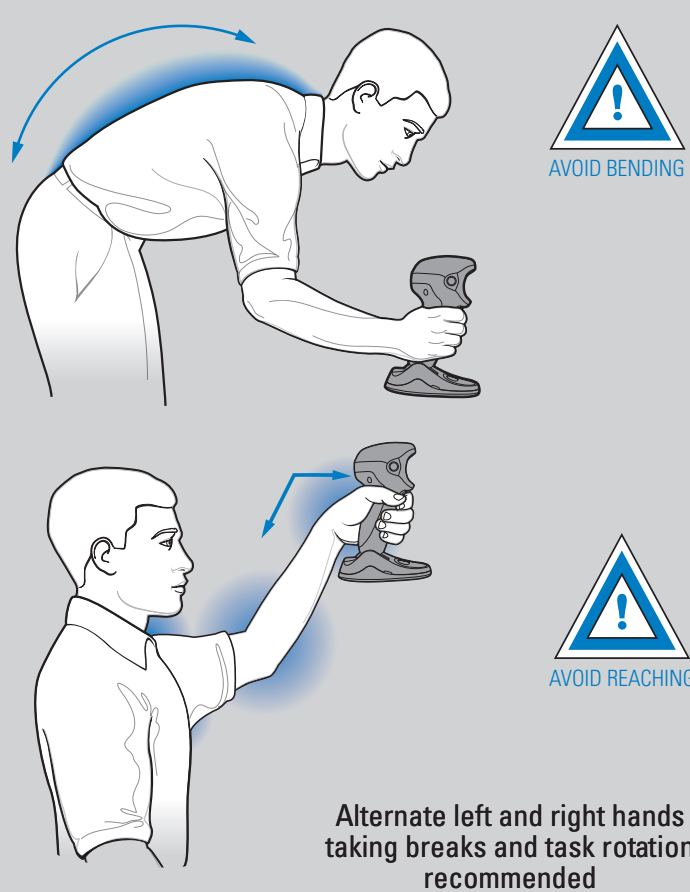
OPTIMUM ARM POSITION



AVOID EXTREME WRIST ANGLES



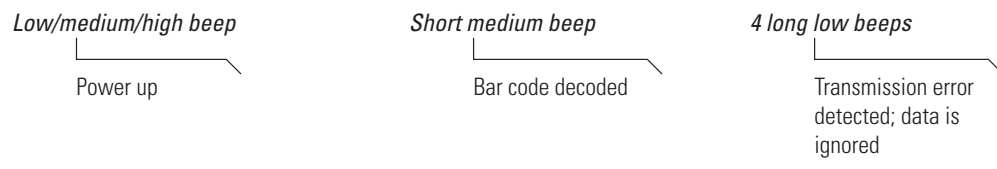
AVOID BENDING AND REACHING



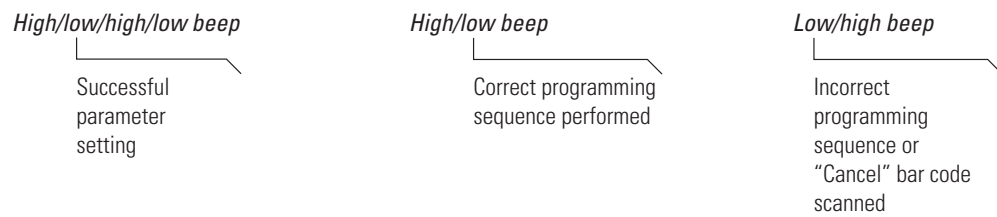
Alternate left and right hands taking breaks and task rotation recommended

BEEPER INDICATIONS

Standard Use



Parameter Menu Scanning

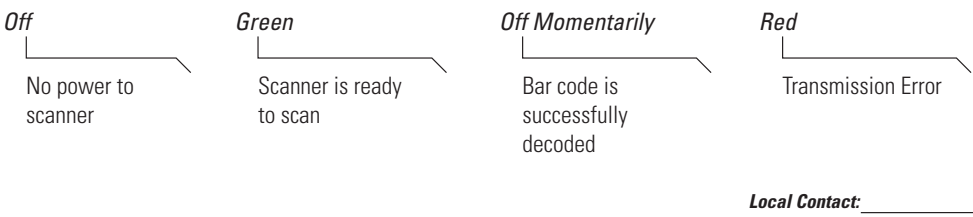


LED INDICATIONS

Hand-Held Scanning



Hands-Free (Presentation) Scanning



Local Contact: _____

123SCAN²

123Scan² is an easy-to-use, PC-based software tool that enables rapid and easy customized setup via a bar code or USB cable. For more information, visit: <http://www.zebra.com/123Scan2>.

DS9808

REGULATORY INFORMATION

© 2015 Symbol Technologies, Inc. Zebra reserves the right to make changes to any product to improve reliability, function, or design.

Warranty For the complete Zebra hardware product warranty statement, go to: <http://www.zebra.com/warranty>.

Service Information If you have a problem using the equipment, contact your facility's Technical or Systems Support.

Waste Electrical and Electronic Equipment (WEEE)

English: For EU Customers: All products at the end of their life must be returned to Zebra for recycling.

Ergonomic Recommendations

Caution: In order to avoid or minimize the potential risk of ergonomic injury follow the recommendations below.

- Reduce or eliminate repetitive motion
Maintain a natural position
Reduce or eliminate excessive force
Keep objects that are used frequently within easy reach

Regulatory Information

This guide applies to Model Number DS9808. All Zebra devices are designed to be compliant with rules and regulations in locations they are sold and will be labeled as required.

Marking and European Economic Area (EEA)



Statement of Compliance Zebra hereby declares that this device is in compliance with all the applicable Directives, 2004/108/EC, 2006/95/EC and 2011/65/EU.

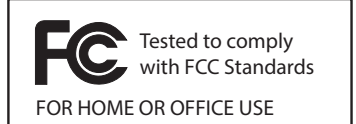
Japan (VCCI) - Voluntary Control Council for Interference Class B ITE

This is a Class B product based on the standard of the Voluntary Control Council for Interference from Information Technology Equipment (VCCI).

Korea Warning Statement for Class B ITE

이 기기는 가정용으로 전자파 적합등록을 한 기기이오니 주거지역에서는 물론 모든 지역에서 사용할 수 있습니다.

Radio Frequency Interference Requirements



Note: This equipment has been tested and found to comply with the limits for a Class B digital device, pursuant to Part 15 of the FCC rules.

Laser Devices

Zebra products using lasers comply with US 21CFR1040.10 and 1040.11 except for devices pursuant to laser notice no. 50, dated June 24, 2007 and IEC 60825-1 (Ed. 2.0), EN60825-1:2007.

The laser classification is marked on one of the labels on the device. Class 1 Laser devices are not considered to be hazardous when used for their intended purpose.

Caution: Use of controls, adjustments or performance of procedures other than those specified herein may result in hazardous laser light exposure.

Power Supply Use ONLY a LISTED, Type no. 50-14000, or PWRS-14000, Direct Plug-In power supply, marked Class 2 or LPS, or SELV, Rated 5 Vdc, 850 mA Min.

- Reorient or relocate the receiving antenna
Increase the separation between the equipment and receiver
Connect the equipment into an outlet on a circuit different from that to which the receiver is connected

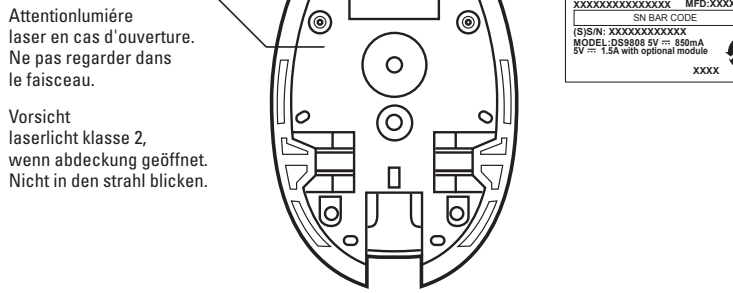
Radio Frequency Interference Requirements - Canada

This Class B digital apparatus complies with Canadian ICES-003. Cet appareil numérique de la classe B est conforme à la norme NMB-003 du Canada.

Caution class 2 laser light when open. Do not stare into beam.

Attention/lumière laser en cas d'ouverture. Ne pas regarder dans le faisceau.

Vorsicht laserlicht klasse 2, wenn abdeckung geöffnet. Nicht in den strahl blicken.



ZEBRA Technologies Corporation
Zebra Technologies Corporation
Lincolnshire, IL U.S.A.
http://www.zebra.com

Zebra and the Zebra head graphic are registered trademarks of ZIH Corp. The Symbol logo is a registered trademark of Symbol Technologies, Inc., a Zebra Technologies company.

72-109917-03 Revision A March 2015

<http://www.zebra.com/ds9808>