

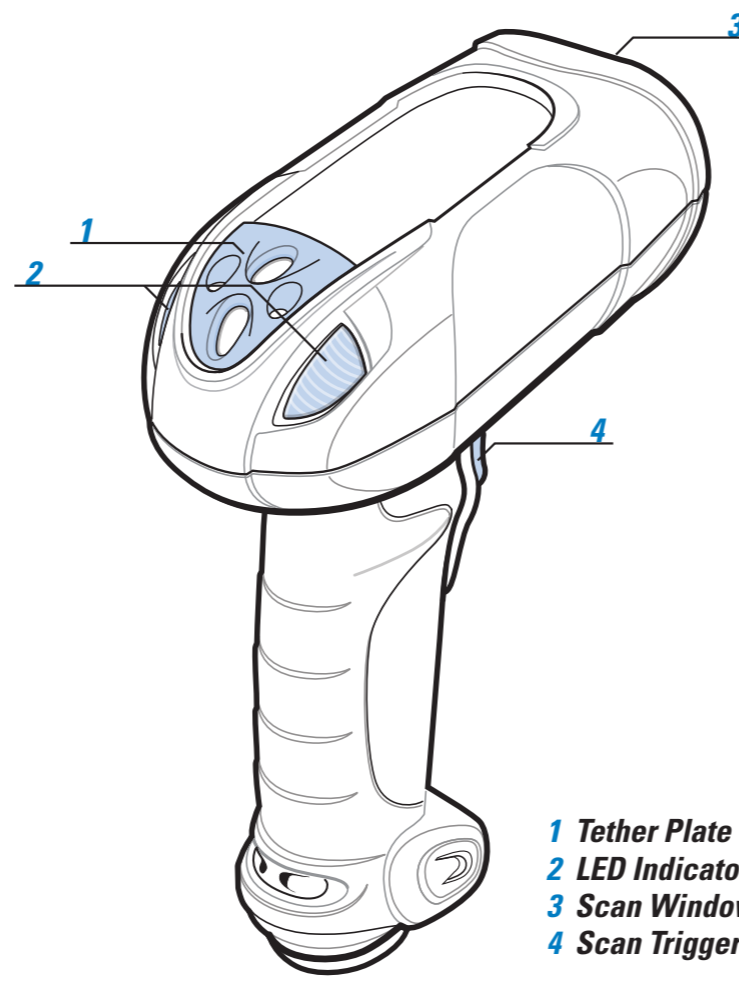
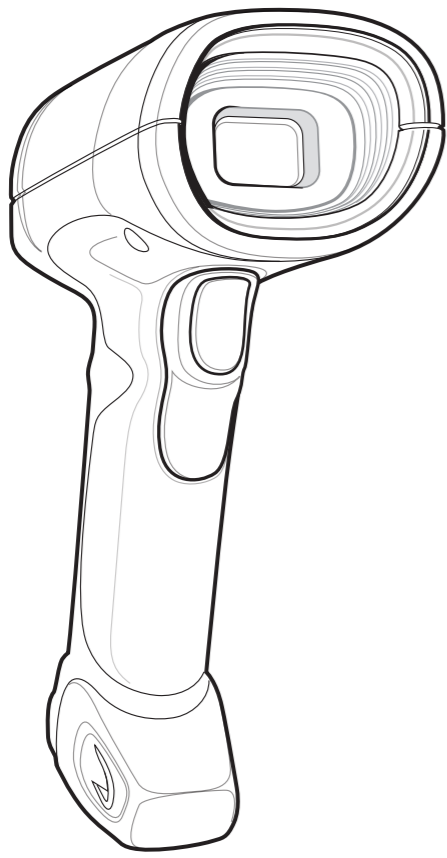
DS3508

Quick Start Guide

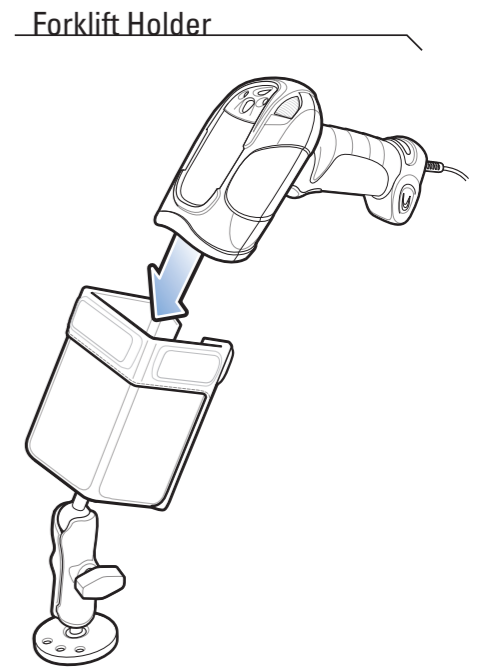
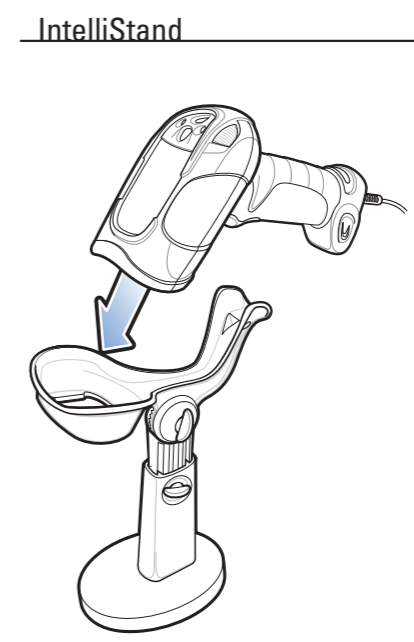
<http://www.zebra.com/ds3508>

See Product Reference Guide for detailed information

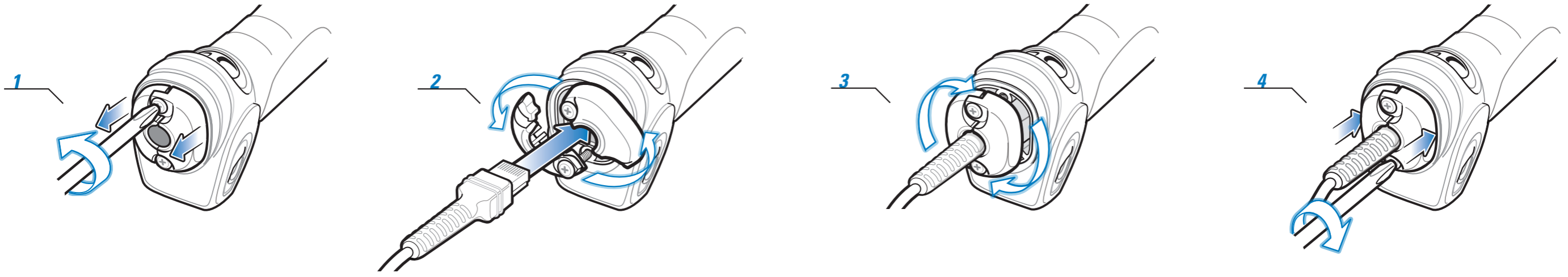
POST IN WORK AREA



- 1 Tether Plate
- 2 LED Indicators
- 3 Scan Window
- 4 Scan Trigger

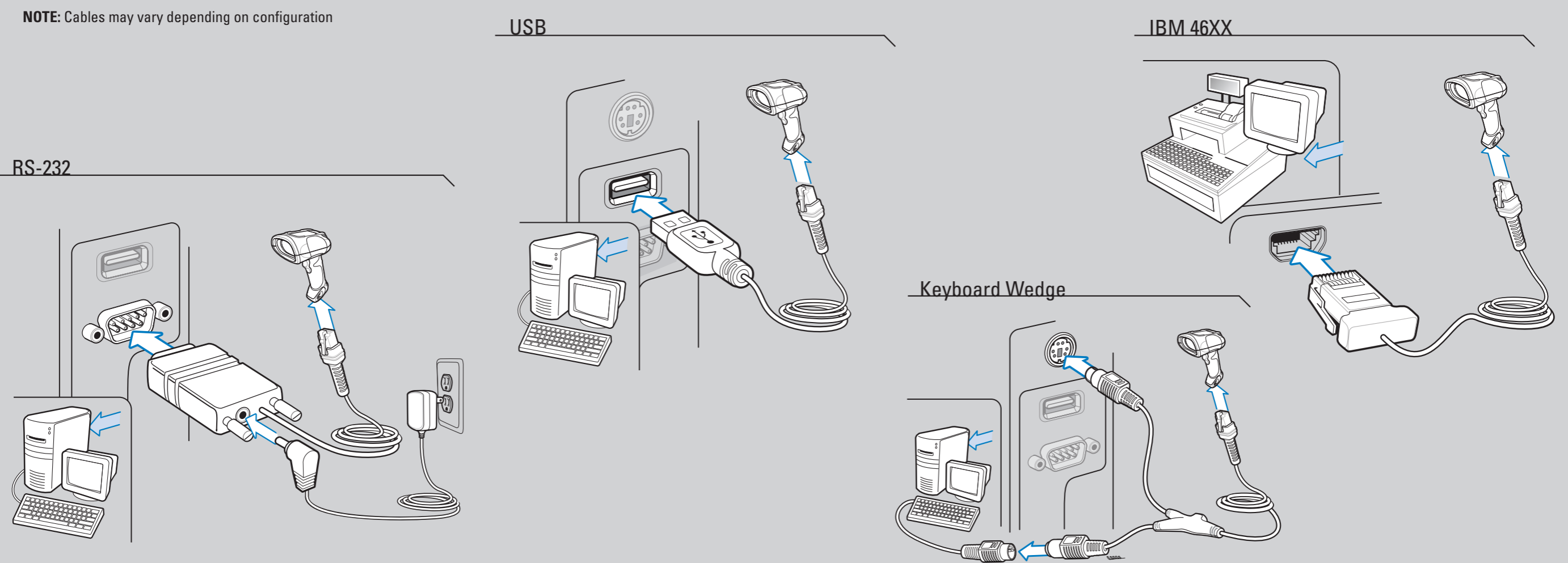


CORD ATTACHMENT



HOST INTERFACES

NOTE: Cables may vary depending on configuration



TROUBLESHOOTING

Scanner not working

- No power to scanner**
Check system power; ensure power supply, if required, is connected
- Incorrect interface cable used**
Ensure that correct interface cable is used
- Interface/power cables are loose**
Check for loose cable connections

Scanner not decoding bar code

- Scanner not programmed for bar code type**
Ensure scanner is programmed to read type of bar code being scanned
- Bar code unreadable**
Ensure bar code is not defaced; try scanning test bar code of same bar code type
- Distance between scanner and bar code incorrect**
Move scanner closer to or further from bar code

Scanner decoding bar code, but data not transmitting to host

- Scanner not programmed for correct host interface**
Check scanner host parameters or edit options
- Interface cable is loose**
Check for loose cable connections

Scanned data incorrectly displayed on host

- Scanner not programmed for correct host interface**
Check scanner host parameters or edit options

DS3508 PROGRAMMING BAR CODES

Set Defaults



SET DEFAULTS

IBM 46XX Host Types



PORT 5B

Keyboard Wedge Host Types



IBM PC/AT and IBM PC COMPATIBLE

USB Host Types



HID KEYBOARD EMULATION



PORT 9B

RS-232 Host Types



STANDARD RS-232



NIXDORF RS-232 MODE B

Scan to Add an Enter Key (Carriage Return/Line Feed)



SCAN OPTIONS



ICL RS-232



FUJITSU RS-232



<DATA><SUFFIX>



NIXDORF RS-232 MODE A



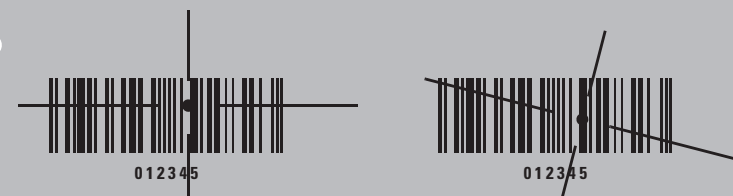
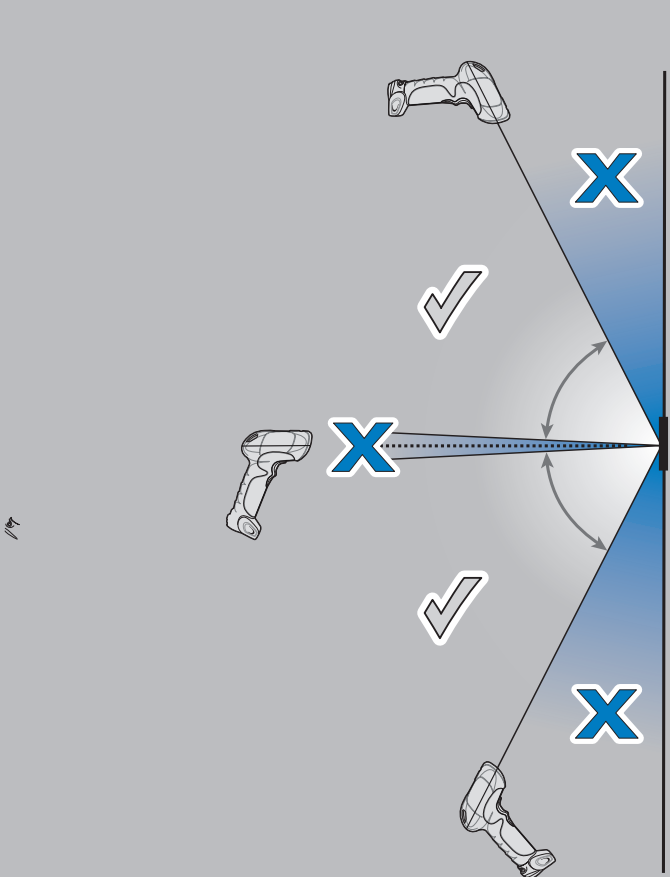
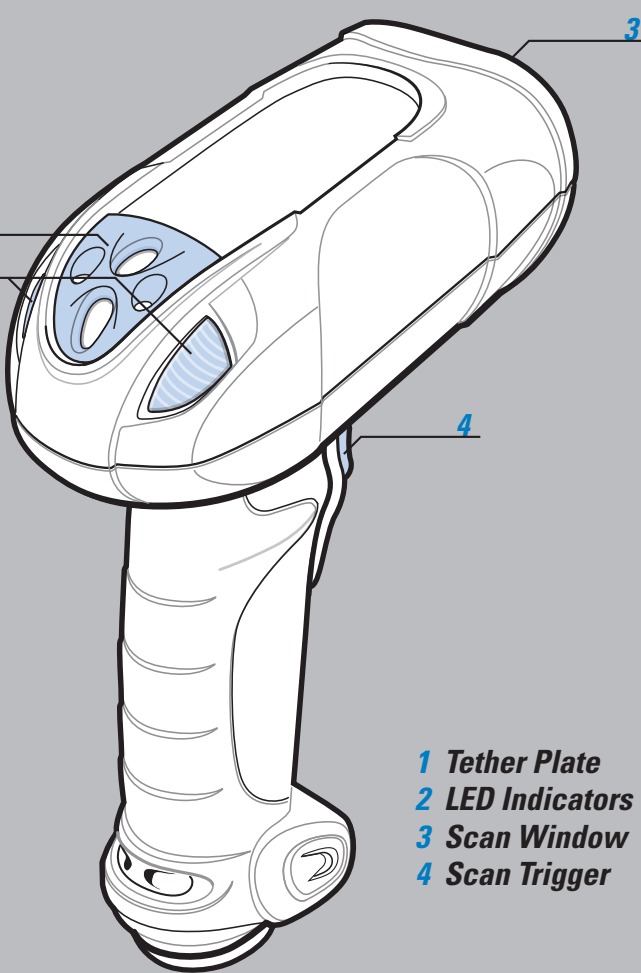
OPOS/JPOS



ENTER

Aiming

Proper Scanning

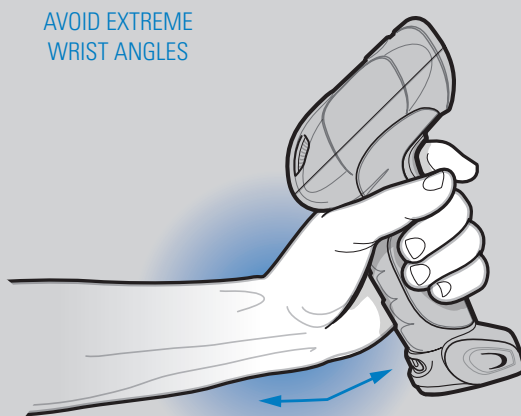
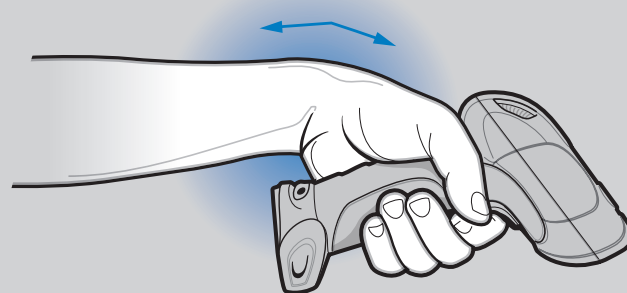


ALTERNATE LEFT AND RIGHT HANDS
TAKING BREAKS AND TASK ROTATION RECOMMENDED

OPTIMUM UPRIGHT BODY POSTURE

AVOID EXTREME WRIST ANGLES

BEEPER INDICATIONS



Standard Use

Low/medium/high beep Power up	Short high beep Bar code decoded (if decode beeper enabled)	4 long low beeps Transmission error detected; data is ignored
---	--	---

Parameter Menu Scanning

High/low/high/low beep Successful parameter setting	High/low beep Correct programming sequence performed	Low/high beep Incorrect programming sequence or Cancel bar code scanned
---	--	---

LED Indications

Off Scanner is on and ready to scan, or no power to scanner	Green Bar code is successfully decoded	Red Transmission error
---	--	----------------------------------

OPTIMUM BODY POSTURE

Optimum Body Posture for Low Scanning



ALTERNATE LEFT AND RIGHT KNEES



Optimum Body Posture for Extended Range Scanning



Local Contact: _____

REGULATORY INFORMATION

© 2014 Symbol Technologies, Inc.

Zebra reserves the right to make changes to any product to improve reliability, function, or design. Zebra does not assume any product liability arising out of, or in connection with, the application or use of any product, circuit, or application described herein.

Warranty

For the complete Zebra hardware product warranty statement, go to: <http://www.zebra.com/warranty>.

For Australia Only

This warranty is given by Zebra Technologies Asia Pacific Pte. Ltd., 71 Robinson Road, #05-02/03, Singapore 068895, Singapore. Our goods come with guarantees that cannot be excluded under the Australian Consumer Law.

Service Information

If you have a problem using the equipment, contact your facility's Technical or Systems Support. If there is a problem with the equipment, they will contact the Zebra Global Support Center at: <http://www.zebra.com/support>.

For the latest version of this guide go to: <http://www.zebra.com/support>.

Waste Electrical and Electronic Equipment (WEEE)

English: For EU Customers: All products at the end of their life must be returned to Zebra for recycling. For information on how to return product, please go to: <http://www.zebra.com/warranty>.

Latvian: ES vārtojoties, visiem gaisma, pasākumiem jāizpildās šādi, lai būtu garantēti vārtojumi, kopējais "Zebra".

Ergonomic Recommendations

Caution: In order to avoid or minimize the potential risk of ergonomic injury follow the recommendations below. Consult with your local Health & Safety Manager to ensure that you are adhering to your company's safety programs to prevent employee injury.

- Reduce or eliminate repetitive motion
- Maintain a natural position
- Reduce or eliminate excessive force
- Keep objects that are used frequently within easy reach
- Perform tasks at correct heights
- Reduce or eliminate vibration
- Reduce or eliminate direct pressure
- Provide adjustable workstations
- Provide adequate clearance
- Provide a suitable working environment
- Improve work procedures.

Regulatory Information

This guide applies to Model Number: DS3508. All Zebra devices are designed to be compliant with rules and regulations in locations they are sold and will be labeled as required.

Any changes or modifications to Zebra equipment, not expressly approved by Zebra, could void the user's authority to operate the equipment. Antennas: Use only the supplied or an approved replacement antenna.

CAUTION:

Only use Zebra approved and UL Listed accessories.

Power Supply

Use ONLY a LISTED Zebra, Type no. 50-14000 (5Vdc/0.5A minimum), or PWRS-14000 (5Vdc/0.5A minimum), Direct Plug-in Power Supply, marked Class 2 or LPS (IEC60950-1, SELV). Use of alternative Power Supply will invalidate any approvals given to this device and may be dangerous.

Japan (VCCI) - Voluntary Control Council for Interference

この装置は、情報処理装置等電波障害自主規制協議会 (VCCI) の基準に基づいたクラスB情報技術装置です。この装置は、家庭環境で使用することを目的としていますが、この装置がラジオやテレビジョン受信機に近接して使用されると、受信障害を引き起こすことがあります。取扱説明書に従って正しい取り扱いをして下さい。

Korean Warning Statement for Class B ITE

기종별	사용자안내문
B급 기기 (가정용 방송통신기기)	이 기기는 가정용(B급)으로 전자파적합등록을 한 기기로서 주로 가정에서 사용하는 것을 목적으로 하며, 모든 지역에서 사용할 수 있습니다.

Ukraine

Дане обладнання відповідає вимогам технічного регламенту №1057, №2008 На обмеження щодо використання деяких небезпечних речовин в електричних та електронних пристроях.

Radio Frequency Interference Requirements

Caution: In order to avoid or minimize the potential risk of ergonomic injury follow the recommendations below. Consult with your local Health & Safety Manager to ensure that you are adhering to your company's safety programs to prevent employee injury.

- Reorient or relocate the receiving antenna
- Increase the separation between the equipment and receiver
- Connect the equipment into an outlet on a circuit different from that to which the receiver is connected
- Consult the dealer or an experienced radio/TV technician for help.

Radio Frequency Interference Requirements - Canada

This Class B digital apparatus complies with Canadian ICES-003. Cet appareil numérique de la classe B est conforme à la norme NMB-003 du Canada.

Marking and European Economic Area (EEA)

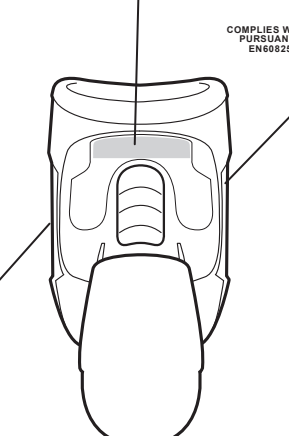
Statement of Compliance Zebra hereby declares that this device is in compliance with all the applicable Directives, 2004/108/EC, 2006/95/EC and 2011/65/EU. A Declaration of Conformity may be obtained from <http://www.zebra.com/doc>.

Laser Devices

Complies with 21CFR1040.10 and 1040.11 except for deviations pursuant to Laser Notice No. 50, June 24, 2007 and EN60825-1:2007 and IEC 60825-1(ED.2).

Class 2 laser scanners use a low power, visible light diode. As with any very bright light source, such as the sun, the user should avoid staring directly into the light beam. Momentary exposure to a Class 2 laser is not known to be harmful.

Scanner Labeling



CAUTION: CLASS 2 LASER LIGHT WHEN OPEN. DO NOT STARE INTO THE BEAM. ATTENTION: LUMIERE LASER EN CAS D'OUVERTURE, NE PAS REGARDER DANS LE FAISCEAU. VORSICHT: LASERLICHT KLASSE 2. WENN ABDECKUNG GEÖFFNET, NICHT IN DEN STRAHLEN BLICKEN. 注意: 打开时及眼睛失效时有激光辐射 勿置视光束



Zebra Technologies Corporation
Lincolnshire, IL U.S.A.
<http://www.zebra.com>

Zebra and the Zebra head graphic are registered trademarks of ZIH Corp. The Symbol logo is a registered trademark of Symbol Technologies, Inc., a Zebra Technologies company.

© 2015 Symbol Technologies, Inc.



72-124802-03 Rev A March 2015