

# DS6708

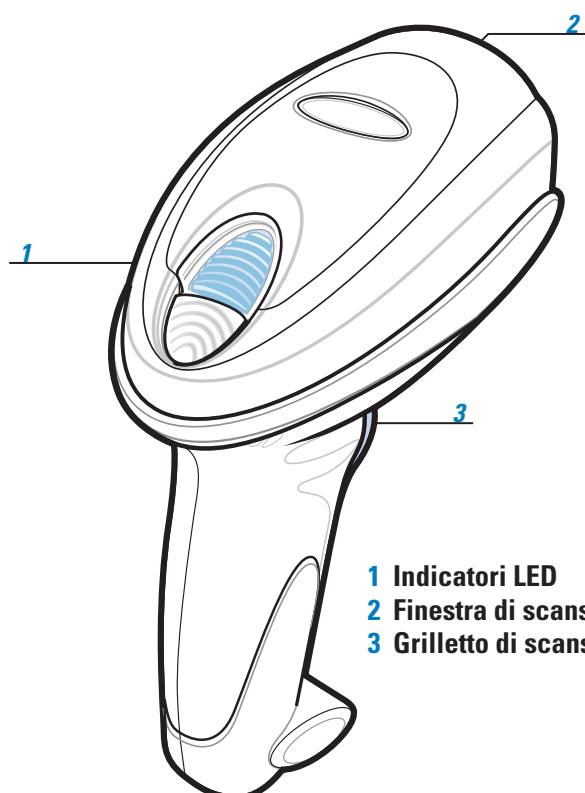
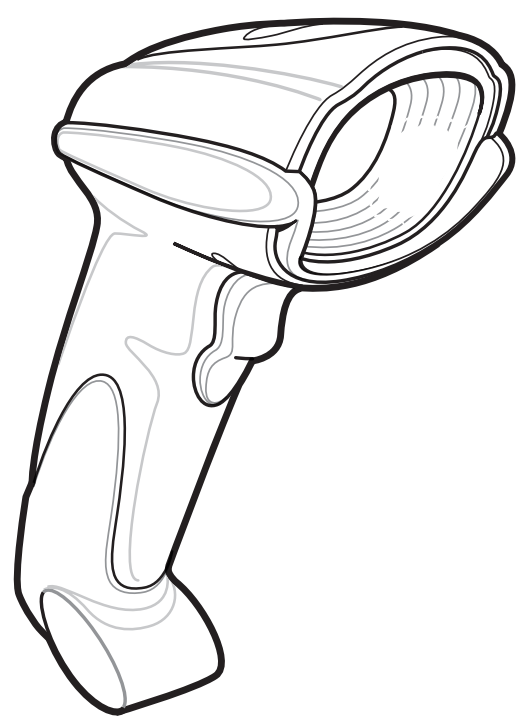
## Guida di avvio rapido

<http://www.zebra.com/ds6708>

Per informazioni dettagliate, consultare la Guida di riferimento

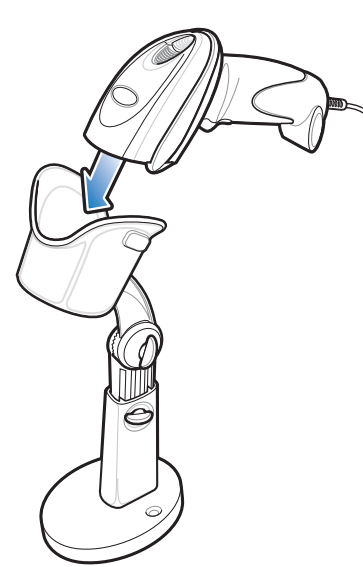
### ACCESSORI

AFFIGGERE NELL'AREA DI LAVORO

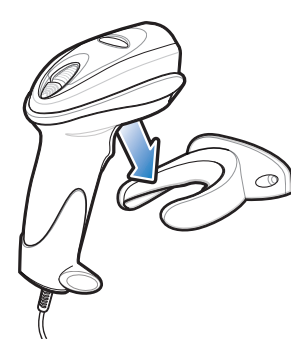


- 1 Indicatori LED
- 2 Finestra di scansione
- 3 Grilletto di scansione

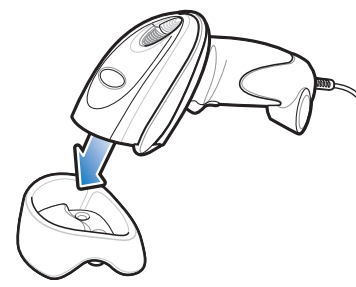
#### IntelliStand



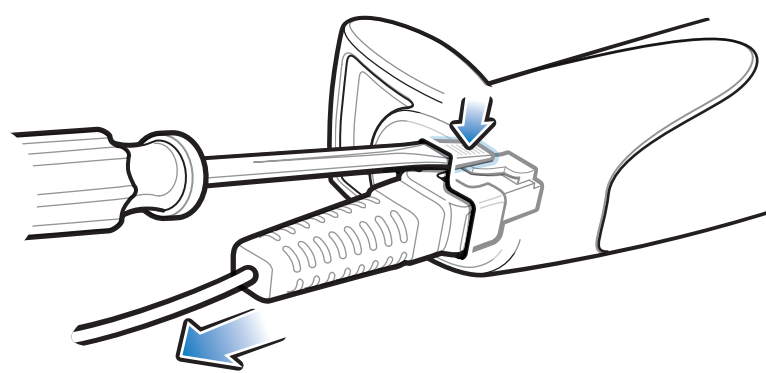
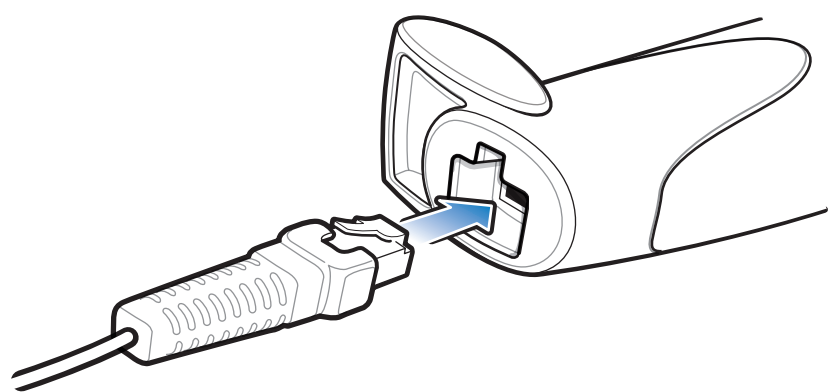
#### Montaggio a parete



#### Supporto per scrivania



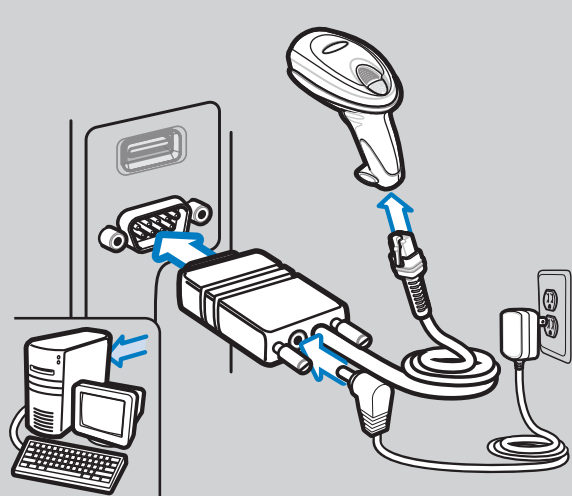
### COLLEGAMENTO/RIMOZIONE DEL CAVO



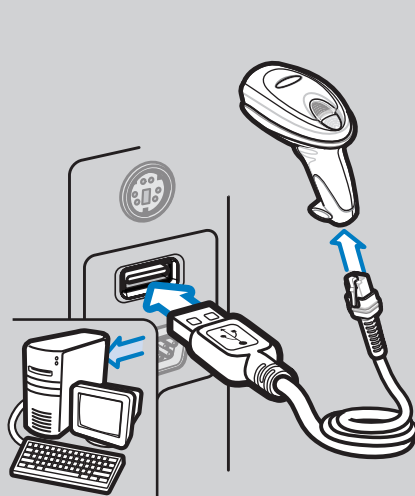
### INTERFACCE HOST

Nota: i cavi possono variare a seconda della configurazione

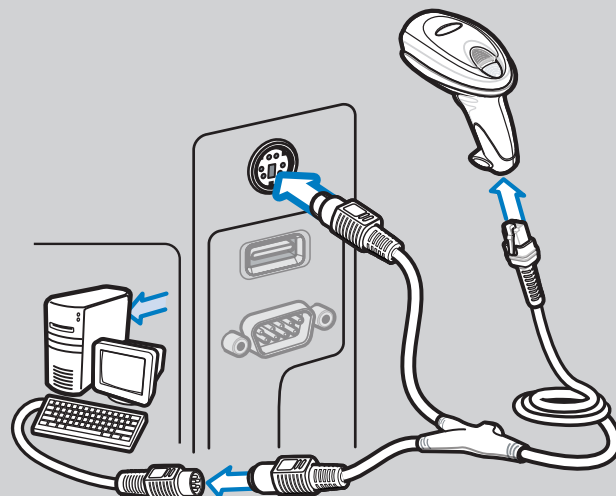
#### RS-232



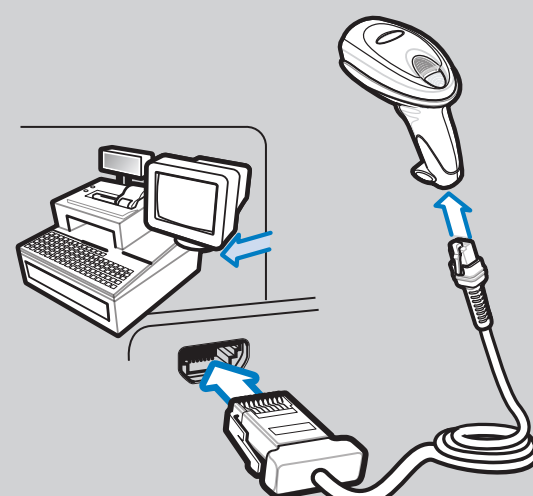
#### USB



#### Emulazione tastiera



#### IBM 46XX



### RISOLUZIONE DEI PROBLEMI

#### Scanner non funzionante

##### Scanner non alimentato

Verificare l'alimentazione del sistema; assicurarsi che la sorgente di alimentazione, se necessaria, sia collegata

##### Cavo di interfaccia utilizzato non corretto

Assicurarsi di utilizzare il cavo di interfaccia corretto

##### I cavi di interfaccia/alimentazione sono allentati

Assicurarsi che i cavi siano saldamente fissati

#### Scanner non decodifica il codice a barre

##### Distanza errata tra scanner e codice a barre

Avvicinare o allontanare lo scanner dal codice a barre

##### Codice a barre non leggibile

Assicurarsi che il codice a barre sia chiaramente leggibile; eseguire una scansione di un codice a barre campione del medesimo tipo

##### Scanner non programmato per il tipo di codice a barre

Assicurarsi che lo scanner sia programmato per effettuare la lettura del tipo di codice a barre di cui si sta eseguendo la scansione

#### Decodifica del codice a barre in corso. Trasmissione dati all'host non riuscita

##### Scanner non programmato per l'interfaccia host corretta

Eseguire la scansione dei codici a barre dei parametri host pertinenti

##### Cavo di interfaccia allentato

Assicurarsi che i cavi siano saldamente fissati

#### Dati raccolti visualizzati in maniera errata su host

##### Scanner non programmato per l'interfaccia host corretta

Eseguire la scansione dei codici a barre dei parametri host pertinenti

### DS6708 PROGRAMMAZIONE CODICI A BARRE

#### Set Defaults



IMPOSTAZIONE PREDEFINITA

#### Tasto Invio (a capo/nuova riga)



<DATA><SUFFIX 1>

#### IBM 46XX Host Types



PORTA 5B

#### USB Host Types



EMULAZIONE TASTIERA HID

#### Level



STUFE



PORTA 9B



USB PORTATILE IBM

#### RS-232 Host Types



STANDARD RS-232



NIXDORF RS-232 MODALITÀ B

#### Keyboard Wedge Host Types



COMPATIBILE PC/AT IBM e PC IBM



ICL RS-232



FUJITSU RS-232



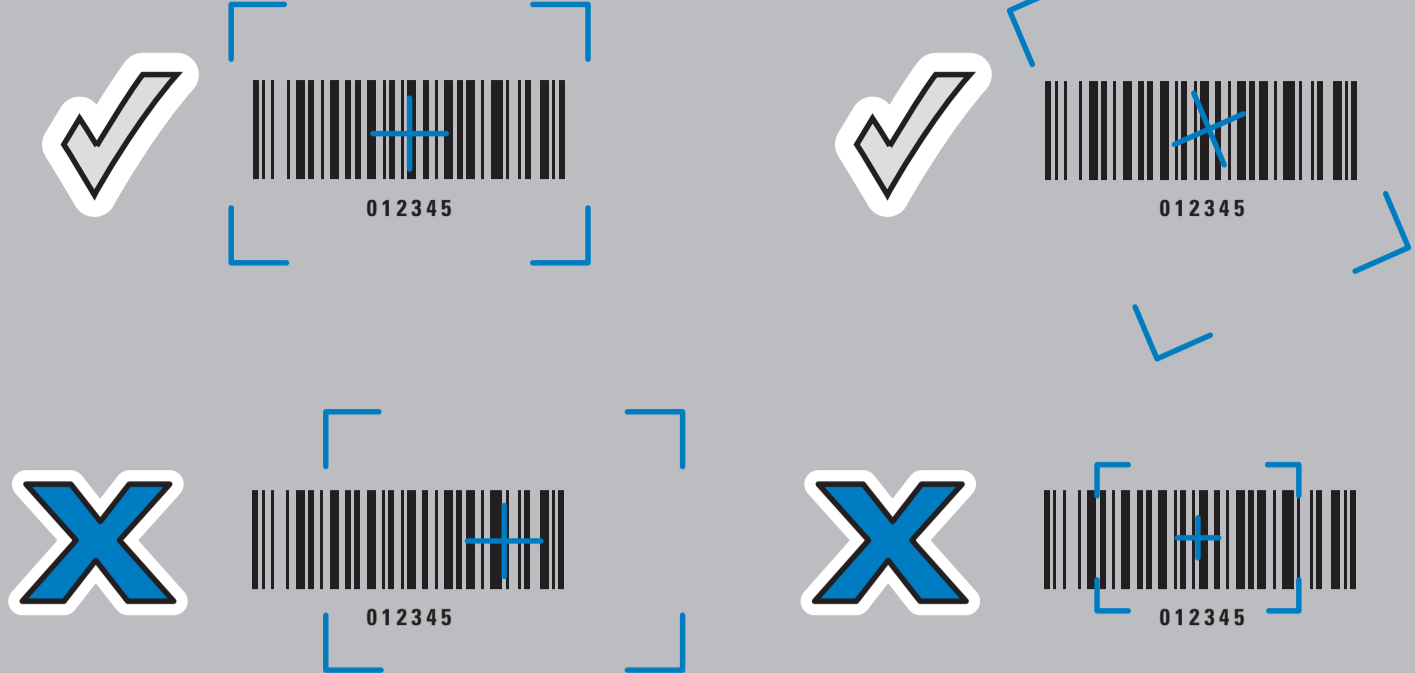
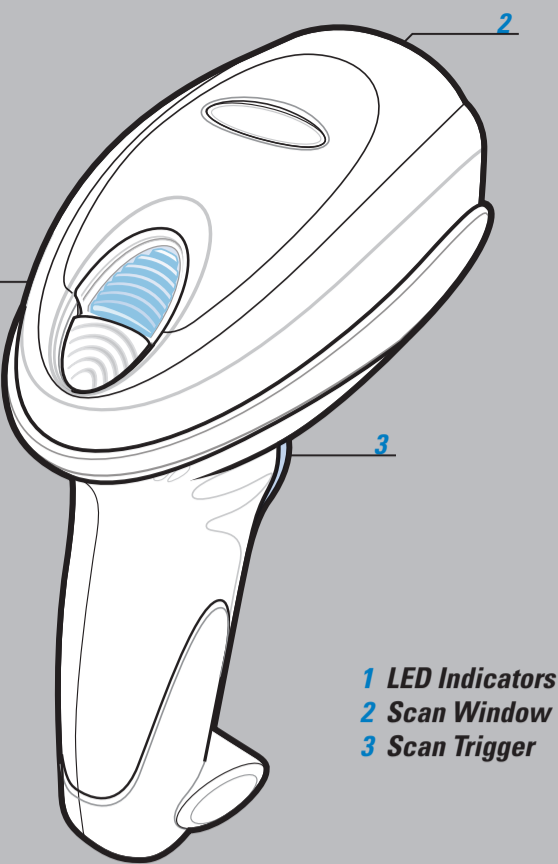
NIXDORF RS-232 MODALITÀ A



OPDS/JPOS



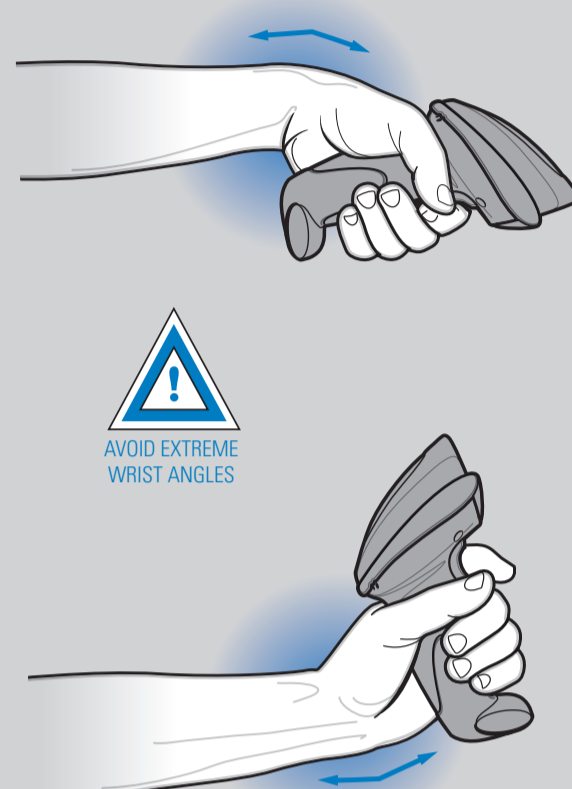
## Aiming



## OPTIMUM ARM POSITION

## AVOID EXTREME WRIST ANGLES

## AVOID BENDING AND REACHING



Alternate left and right hands taking breaks and task rotation recommended

## BEEPER INDICATIONS

## LED INDICATIONS

### Standard Use

<b>Low/medium/high beep</b> Power up	<b>Short medium beep</b> Bar code decoded	<b>4 long low beeps</b> Transmission error detected; data is ignored
---	--	---

### Off

Scanner is on and ready to scan, or no power to scanner

### Green

Bar code is successfully decoded

### Red

Transmission error

### Parameter Menu Scanning

<b>High/low/high/low beep</b> Successful parameter setting	<b>High/low beep</b> Correct programming sequence performed	<b>Low/high beep</b> Incorrect programming sequence or "Cancel" bar code scanned
---	--	---

Local Contact: \_\_\_\_\_

# 123SCAN<sup>2</sup>

123Scan<sup>2</sup> is an easy-to-use, PC-based software tool that enables rapid and easy customized setup via a bar code or USB cable. For more information, visit: <http://www.zebra.com/123Scan2>.

## REGULATORY INFORMATION

### © 2015 Symbol Technologies, Inc.

Zebra reserves the right to make changes to any product to improve reliability, function, or design. Zebra does not assume any product liability arising out of, or in connection with, the application or use of any product, circuit, or application described herein. No license is granted, either expressly or by implication, estoppel, or otherwise under any patent right or patent, covering or relating to any combination, system, apparatus, machine, material, method, or process in which Zebra products might be used. An implied license exists only for equipment, circuits, and subsystems contained in Zebra products.

### Warranty

For the complete Zebra hardware product warranty statement, go to: <http://www.zebra.com/warranty>.

### For Australia Only

For Australia Only, this warranty is given by Zebra Technologies Asia Pacific Pte. Ltd., 71 Robinson Road, #05-02/03, Singapore 068895, Singapore. Our goods come with guarantees that cannot be excluded under the Australian Consumer Law. You are entitled to a replacement or refund for a major failure and compensation for any other reasonably foreseeable loss or damage. You are also entitled to have the goods repaired or replaced if the goods fail to be of acceptable quality and the failure does not amount to a major failure.

Zebra Technologies Corporation Australia's limited warranty above is in addition to any rights and remedies you may have under the Australian Consumer Law. If you have any queries, please call Zebra Technologies Corporation at +65 6858 0722. You may also visit our website: <http://www.zebra.com> for the most updated warranty terms.

### Service Information

If you have a problem using the equipment, contact your facility's Technical or Systems Support. If there is a problem with the equipment, they will contact the Zebra Support Center at: <http://www.zebra.com/support>.

For the latest version of this guide go to: <http://www.zebra.com/support>.

### Power Supply

Use ONLY a LISTED. Type no. 50-14000, or PWR5-14000, Direct Plug-In power supply, marked Class 2 or LPS, or SELV, Rated 5 Vdc, 850 mA Min. (IEC 60950-1). Use of alternative power supply will invalidate any approvals given to this device and may be dangerous.

### Waste Electrical and Electronic Equipment (WEEE)

**English:** For EU Customers: All products at the end of their life must be returned to Zebra for recycling. For information on how to return product, please go to: <http://www.zebra.com/warranty>.

**Magyar:** Az EU-ban vásárolóknak: Minden termékemet a Zebra vállalatához kell eljuttatni újrahasznosítás céljából. A termék visszajuttatásának módjával kapcsolatos információkat látogasson el a <http://www.zebra.com/warranty> weboldalra.

**Malta:** Għall klijenti f'EU: Il-prodotti kollha li jkunu waslu f'għajr tal-hajja tal-fattur li għadhom, idur jgħid informazzjoni għall-Zebra għar-riċiklaġġ. Għal aktar taġġir dwar kiel għandek imbrojta jiprodotti, jekk jogħġbok zur <http://www.zebra.com/warranty>.

**Nederlands:** Voor klanten in de EU: alle producten dienen aan het einde van hun levensduur naar Zebra te worden teruggezonden voor recycling. Raadpleeg <http://www.zebra.com/warranty> voor meer informatie over het terugzenden van producten.

**Polski:** Klienci z obszaru Unii Europejskiej: Produkty wycofane z eksploatacji należy zwrócić do firmy Zebra w celu ich utylizacji. Informacje na temat zwrótu produktów znajdź na stronie internetowej <http://www.zebra.com/warranty>.

**Português:** Para clientes da UE: todos os produtos no fim de vida devem ser devolvidos à Zebra para reciclagem. Para obter informações sobre como devolver o produto, visite <http://www.zebra.com/warranty>.

**Românesc:** Pentru clienți din UE: Toate produsele, la sfârșitul duratei lor de funcționare, trebuie returnate la Zebra pentru reciclare. Pentru informații despre returnarea produsului, accesați <http://www.zebra.com/warranty>.

**Slovenščina:** Pre zakaznikov z krajin EU: Vselej stroje morajo biti po uporabi oddani v Zebra za recikliranje. Za informacije o vračilu izdelka obiščite: <http://www.zebra.com/warranty>.

**Slovenščina:** Za kupce v EU: vsi izdelki se morajo po poteku življenjske dobe vrniti podjetju Zebra za recikliranje. Za informacije o vračilu izdelka obiščite: <http://www.zebra.com/warranty>.

**Suomi:** Asiakkaiden Euroopan unionin alueella: Kaikki laitteet on palautettava valmistajalle Zebra-yhtiölle, kun tuote ei enää käytössä. Lisätietoja laitteiden palauttamisesta on osoitteessa <http://www.zebra.com/warranty>.

**Svenska:** För kunder inom EU: Alla produkter som upphört sin livsföring måste returneras till Zebra för återvinning. Information om hur du returnerar produkten finns på <http://www.zebra.com/warranty>.

**Türkçe:** AB ülkelerindeki tüm müşterilerimizin cihazlarını kullanım ömürleri dolmuş olduğunda veya kullanılmadık takdirde Zebra'ya teslim etmelerini rica ediyoruz. Ürünlerimizi nasıl teslim edeceğinizi hakkında bilgi için lütfen şu adresi ziyaret edin: <http://www.zebra.com/warranty>.

**Ukrainian:** Для клієнтів з країн ЄС: всі пристрої після закінчення терміну експлуатації необхідно повертати до компанії Zebra для рециклінгу. Для отримання інформації про це відвідайте веб-сайт: <http://www.zebra.com/warranty>.

### Ergonomic Recommendations

**Caution:** In order to avoid or minimize the potential risk of ergonomic injury follow the recommendations below. Consult with your Local Health & Safety Manager to ensure that you are adhering to your company's safety programs to prevent employee injury.

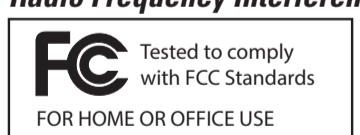
- Reduce or eliminate repetitive motion
- Maintain a natural position
- Reduce or eliminate excessive force
- Keep objects that are used frequently within easy reach
- Perform tasks at correct heights
- Reduce or eliminate vibration
- Reduce or eliminate direct pressure
- Provide adjustable workstations
- Provide adequate clearance
- Provide a suitable working environment
- Improve work procedures.

### Regulatory Information

This guide applies to Model Number DS6708. All Zebra devices are designed to be compliant with rules and regulations in locations they are sold and will be labeled as required. Local language translations are available at the following website: <http://www.zebra.com/support>.

Any changes or modifications to Zebra equipment, not expressly approved by Zebra, could void the user's authority to operate the equipment. Antennas: Use only the supplied or an approved replacement antenna. Unauthorized antennas, modifications, or attachments could cause damage and may violate regulations.

### Radio Frequency Interference Requirements



**Note:** This equipment has been tested and found to comply with the limits for a Class B digital device, pursuant to Part 15 of the FCC rules. These limits are designed to provide reasonable protection against harmful interference in a residential installation. This equipment generates, uses and can radiate radio frequency energy and, if not installed and used in accordance with the instruction manual, may cause harmful interference to radio communications. However there is no guarantee that interference will not occur in a particular installation. If this equipment does cause harmful interference to radio or television reception, which can be determined by turning the equipment off and on, the user is encouraged to try to correct the interference by one or more of the following measures:

- Reorient or relocate the receiving antenna
- Increase the separation between the equipment and receiver
- Connect the equipment into an outlet on a circuit different from that to which the receiver is connected
- Consult the dealer or an experienced radio/TV technician for help.

### Radio Frequency Interference Requirements – Canada

This Class B digital apparatus complies with Canadian ICES-003. Cet appareil numérique de la classe B est conforme à la norme NMB-003 du Canada.

### Marking and European Economic Area (EEA)



**Statement of Compliance**  
Zebra hereby declares that this device is in compliance with all the applicable Directives, 2004/108/EC, 2006/95/EC and 2011/65/EU. A Declaration of Conformity may be obtained from <http://www.zebra.com/doc>.

### Ukraine

Дане обладнання відповідає вимогам технічного регламенту №1057, № 2008 на обмеження щодо використання деяких небезпечних речовин в електричних та електронних пристроях.

### Laser Labels



In accordance with Clause 5, IEC 825 and EN60825, the following information is provided to the user:

<b>ENGLISH</b> CLASS 1 CLASS 2	CLASS 1 LASER PRODUCT LASER LIGHT DO NOT STARE INTO BEAM CLASS 2 LASER PRODUCT	<b>HEBREW</b> מוצר לייזר רמה 1 מוצר לייזר רמה 2 אזהרה: אל תבטו אל תוך הוורט	<b>ITALIAN / ITALIANO</b> PRODOTTO AL LASER DI CLASSE 1 LUCE LASER NON FISSARE IL RAGGIO/PRODOTTO AL LASER DI CLASSE 2	<b>NORWEGIAN / NORSK</b> KLASSE 1 LASERPRODUKT, KLASSE 1 KLASSE 2 LASERPRODUKT, KLASSE 2	<b>PORTUGUESE / PORTUGUÊS</b> CLASSE 1 PRODUTO LASER DA CLASSE 1 CLASSE 2 LUZ DE LASER NÃO FIXAR O RAIO LUMINOSO PRODUTO LASER DA CLASSE 2	<b>SPANISH / ESPAÑOL</b> PRODUCTO LASER DE LA CLASE 1 LUZ LASER NO MIRE FJAJAMENTE EL HAZ PRODUCTO LASER DE LA CLASE 2	<b>GERMAN / DEUTSCH</b> KLASSE 1 LASERPRODUKT DER KLASSE 1 KLASSE 2 LASERSTRAHLEN NICHT DIREKT IN DEN LASERSTRAHL SCHAUEN LASERPRODUKT DER KLASSE 2	<b>SWEDISH / SVENSKA</b> KLASS 1 LASERPRODUKT KLASS 1 KLASS 2 LASERLJUS STRÅLA INTE MOT STRÅLEN LASERPRODUKT KLASS 2	<b>CHINESE / 简体中文</b> 1类 1类激光产品 2类 2类激光产品	<b>KOREAN</b> / 한국어 1등급 레이저 제품 2등급 레이저 제품 이 광선을 주의하지 마십시오. 2등급 레이저 주의
--------------------------------------	---	--	---	--	---	--	--	---	---	---

### Laser Devices

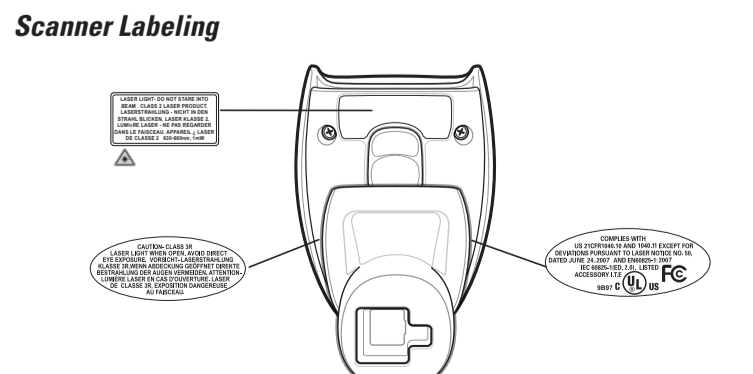
Zebra products using lasers comply with US 21CFR1040.10 and 1040.11 except for deviations pursuant to laser notice no. 50, dated June 24, 2007 and IEC 60825-1 (Ed. 2.0), EN60825-1:2007. The laser classification is marked on one of the labels on the product.

Class 1 laser devices are not considered to be hazardous when used for their intended purpose. The following statement is required to comply with US and international regulations:

**Caution:** Use of controls, adjustments or performance of procedures other than those specified herein may result in hazardous laser light exposure.

Class 2 laser scanners use a low power, visible light diode. As with any very bright light source, such as the sun, the user should avoid staring directly into the light beam. Momentary exposure to a Class 2 laser is not known to be harmful.

### Scanner Labeling



Zebra Technologies Corporation  
Lincolnshire, IL U.S.A.  
<http://www.zebra.com>

Zebra and the Zebra head graphic are registered trademarks of ZIH Corp. The Symbol logo is a registered trademark of Symbol Technologies, Inc., a Zebra Technologies company.  
© 2015 Symbol Technologies, Inc.



72-83973-02 Revision A March 2015

<http://www.zebra.com/ds6708>