

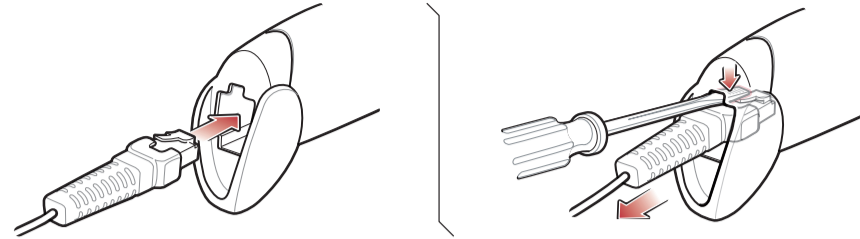
# LS2208 快速入门指南

<http://www.symbol.com/ls2208>

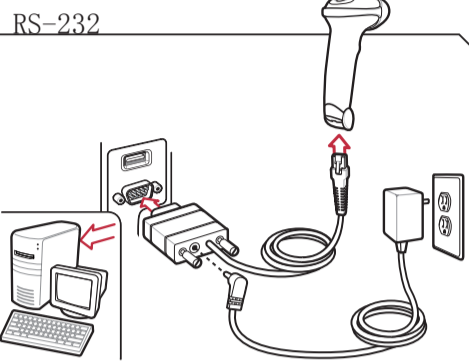


有关详细信息，请参阅产品参考指南

## 步骤 1 - 电线连接/拆除



## 步骤 2 - 连接至主机



## 步骤 3 - 扫描以下条码之一



标准 RS-232



ICL RS-232



NIXDORF RS-232 模式 A



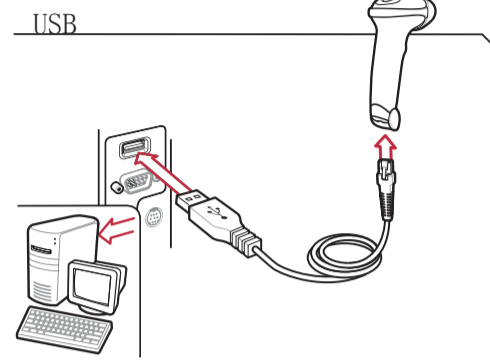
NIXDORF RS-232 模式 B



FUJITSU RS-232



OPOS/JPOS



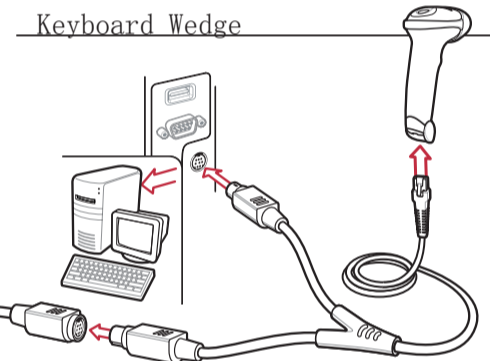
## 步骤 3 - 扫描以下条码之一



HID 键盘仿真



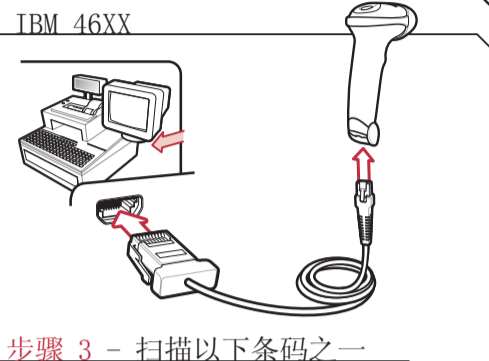
IBM 手持 USB



## 步骤 3 - 扫描以下条码



IBM PC/AT 和 IBM PC 兼容



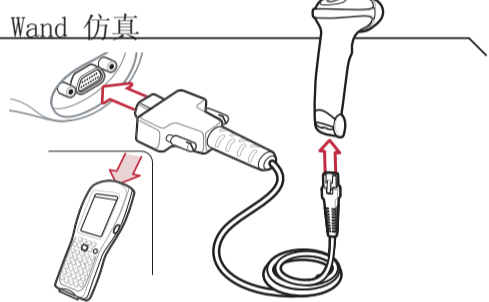
## 步骤 3 - 扫描以下条码之一



端口 5B



端口 9B



## 步骤 3 - 扫描以下条码之一



SYMBOL WAND



启用转换为 CODE 39 码



禁用转换为 CODE 39 码

## 其它设置

### 设置默认值



设置默认值

### 回车/换行



扫描选项



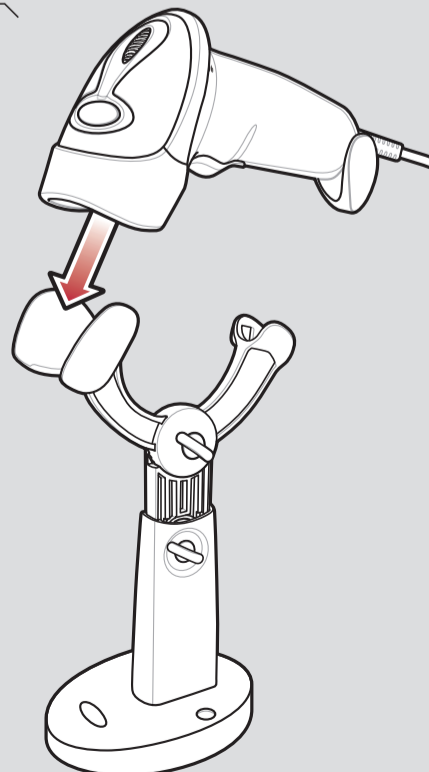
<数据><后缀>



输入

## 附件

### 智能支架



## 故障排除

### 扫描器不工作

扫描器未通电	使用了不正确的接口电缆	接口/电源电缆松动
检查系统电源，确保已连接电源（如有必要）	确保使用了正确的接口电缆	确保所有电缆连接已固定

### 扫描器正在对条码解码，但尚未将数据传输到主机

未按正确的主机接口对扫描器编程	接口电缆松动
扫描适当的主机参数条码。	确保所有电缆连接已固定

### 扫描数据在主机上显示不正确

未按正确的主机接口对扫描器编程
扫描适当的主机参数条码。

### 扫描器不在对条码解码

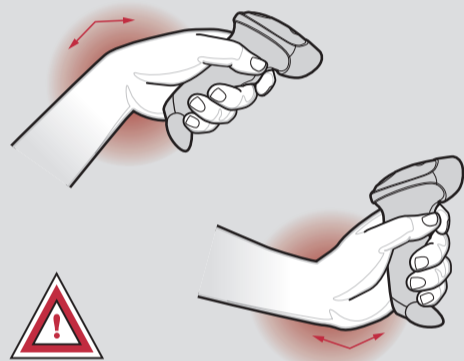
未按条码类型对扫描器编程	条码不可读	扫描器与条码之间的距离不正确
确保已对扫描器编程，使其可读取要扫描的条码类型。	确保条码无缺陷，尝试扫描具有相同条码类型的测试条码	将扫描器移近或远离条码

最佳手臂位置



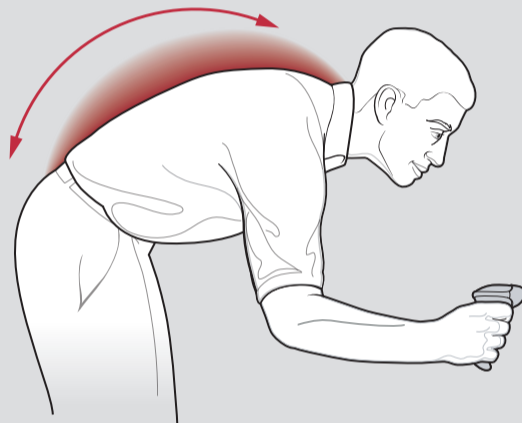
1 LED  
2 扫描窗口  
3 扫描触发开关

手腕避免过度弯曲



手腕避免过度弯曲

避免弯腰



避免弯腰

避免手臂过度举高



避免手臂过度举高

人体工程学建议

警告：为避免或减少对人体造成伤害的潜在危险，请遵循以下建议。与您当地的“健康和安全管理人员”协商，确保遵守公司的安全计划以防职工受到伤害。

- 减少或消除重复的动作
- 保持自然的位置
- 减少或消除过多的强制力
- 保持经常使用的物体在容易得到的范围内
- 在正确的高度执行作业
- 减少或消除振动
- 减少或消除定向压力
- 提供可调节的工作台
- 提供足够的间距
- 提供合适的工作环境
- 改善工作过程。

规章信息

©2005 SYMBOL TECHNOLOGIES, INC. All rights reserved.

Symbol reserves the right to make changes to any product to improve reliability, function, or design. Symbol does not assume any product liability arising out of, or in connection with, the application or use of any product, circuit, or application described herein. No license is granted, either expressly or by implication, estoppel, or otherwise under any patent right or patent, covering or relating to any combination, system, apparatus, machine, material, method, or process in which Symbol products might be used. An implied license exists only for equipment, circuits, and subsystems contained in Symbol products. Symbol and the Symbol logo are registered trademarks of Symbol Technologies, Inc. Other product names mentioned in this manual may be trademarks or registered trademarks of their respective companies and are hereby acknowledged. Symbol Technologies, Inc., One Symbol Plaza, Holtsville, N.Y. 11742-1300, <http://www.symbol.com>

Patents

This product is covered by one or more of the patents listed on the website: [www.symbol.com/patents](http://www.symbol.com/patents).

Service Information

Before you use the unit, it must be configured to operate in your facility's network and run your applications.

If you have a problem running your unit or using your equipment, contact your facility's Technical or Systems Support. If there is a problem with the equipment, they will contact the Symbol Support Center:

United States	1-800-653-5350 or 1-631-738-2400
Canada	905-629-7226
United Kingdom	0800 328 2424
Asia/Pacific	+65-6796-9600
Australia	1-800-672-906
Austria/Österreich	1-505-5794-0
Denmark/Danmark	7020-1718
Finland/Suomi	9 5407 580
France	01-40-96-52-21
Germany/Deutschland	6074-49020
Italy/Italia	2-484441
Mexico/México	5-520-1835
Netherlands/Nederland	315-271700
Norway/Norge	+47 2232 4375
South Africa	11-8095311
Spain/España	91 324 40 00 (Inside Spain) +34 91 324 40 00 (Outside Spain)
Sweden/Sverige	84452900
Latin America Sales Support	1-800-347-0178 (Inside US) +1-954-255-2610 (Outside US)
Europe/Mid-East Distributor Operations	
Contact local distributor or call	+44 118 945 7360

For the latest version of this guide go to: <http://www.symbol.com/manuals>.

Laser Labels

In accordance with Clause 5, IEC 825 and EN60825, the following information is provided to the user:

<b>ENGLISH</b> CLASS 1 CLASS 2	CLASS 1 LASER PRODUCT LASER LIGHT DO NOT STARE INTO BEAM CLASS 2 LASER PRODUCT	<b>HEBREW</b> מוצר לייזר רמה 1 אור לייזר רמה 2 אין להביט אל תוך הזרם מוצר לייזר רמה 2
<b>DANISH / DANSK</b> KLASSE 1 KLASSE 2	KLASSE 1 LASERPRODUKT LASERLYF SE IKKE IND I STRÅLEN KLASSE 2 LASERPRODUKT	<b>ITALIAN / ITALIANO</b> CLASSE 1 CLASSE 2
<b>DUTCH / NEDERLANDS</b> KLASSE 1 KLASSE 2	KLASSE 1 LASERPRODUKT LASERLICHT NIET IN STRAAL STAREN KLASSE 2 LASERPRODUKT	<b>NORWEGIAN / NORSK</b> KLASSE 1 KLASSE 2
<b>FINNISH / SUOMI</b> LUOKKA 1 LUOKKA 2	LUOKKA 1 LASERTUOTE LASERVALO ÄLÄ TUIJOTA SÄDETTÄ LUOKKA 2 LASERTUOTE	<b>PORTUGUESE / PORTUGUÊS</b> CLASSE 1 CLASSE 2
<b>FRENCH / FRANÇAIS</b> CLASSE 1 CLASSE 2	PRODUIT LASER DE CLASSE 1 LUMIÈRE LASER NE PAS REGARDER LE RAYON FIXEMENT PRODUIT LASER DE CLASSE 2	<b>SPANISH / ESPAÑOL</b> CLASE 1 CLASE 2
<b>GERMAN / DEUTSCH</b> KLASSE 1 KLASSE 2	LASERPRODUKT DER KLASSE 1 LASERSTRAHLEN NICHT DIREKT IN DEN LASERSTRAHL SCHAUEN LASERPRODUKT DER KLASSE 2	<b>SWEDISH / SVENSKA</b> KLASS 1 KLASS 2
<b>JAPANESE / 日本語</b> 第1種 第2種	レーザー製品 レーザー光線 光線を見つめないでください レーザー製品	<b>CHINESE / 简体中文</b> 1类 2类
		<b>KOREAN / 한국어</b> 1등급 2등급

规章信息

所有 Symbol 设备都遵照出售所在地的规章制度设计，并按照规定进行标记。如果未经过 Symbol Technologies 明确地批准，对 Symbol Technologies 设备进行任何更换或，将可能导致取消用户操作此设备的授权对于天线，请仅使用所提供的或经批准的代用天。使用未经授权天线、擅做修改或连接都可能造成损坏，且可能违反规章。



扫描仪标签

Symbol 设备使用的激光符合 US 21CFR1040.10 and 1040.11, EN60825-1:1994+ A1:2002 +A2:2001 and IEC60825-1:1993+A1:1997+A2:2001。在设备的一个标签上标有激光分类。第 1 类激光设备用于既定用途时，不存在危险。下列陈述要求符合美国及国际规章：

警告：除此详细说明书之外的使用控制、步骤调整或执行，可能导致危险的激光辐射。第 2 类激光扫描仪使用低功率、可见的发光二极管。与任何非常明亮的光源一样，如太阳，用户应避免直接凝视光线。第 2 类激光瞬间辐射的危害不可知。

Radio Frequency Interference Requirements



Note: This equipment has been tested and found to comply with the limits for a Class B digital device, pursuant to Part 15 of the FCC rules. These limits are designed to provide reasonable protection against harmful interference in residential installation. This equipment generates, uses and can radiate radio frequency energy and, if not installed and used in accordance with the instruction manual, may cause harmful interference to radio communications. However there is no guarantee that interference will not occur in a particular installation. If this equipment does cause harmful interference to radio or television reception, which can be determined by turning the equipment off and on, the user is encouraged to try to correct the interference by one or more of the following measures:

- Reorient or relocate the receiving antenna
- Increase the separation between the equipment and receiver
- Connect the equipment into an outlet on a circuit different from that to which the receiver is connected
- Consult the dealer or an experienced radio/TV technician for help.

Radio Frequency Interference Requirements – Canada

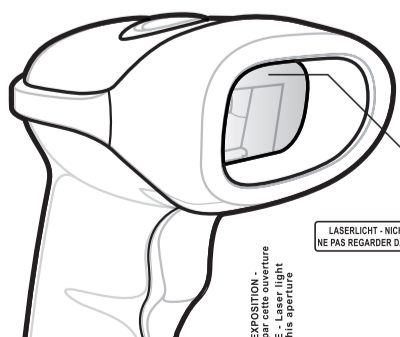
This Class B digital apparatus complies with Canadian ICES-003. Cet appareil numérique de la classe B est conforme à la norme NMB-003 du Canada.

Marking and European Economic Area (EEA)



Statement of Compliance

Symbol Technologies, Inc., hereby declares that this device is in compliance with all the applicable Directives, 89/336/EEC, 73/23/EEC. A Declaration of Conformity may be obtained from <http://www2.symbol.com/doc>



EVITER TOUTE EXPOSITION -  
Lumière laser émise par cette ouverture  
Evitez de regarder dans cette ouverture  
It is emitted from this aperture

LASERLICHT - NICHT IN DEN STRAHL BLICKEN. LASER KLASSE 2  
LUMIÈRE LASER - NE PAS REGARDER DANS LE FAISCEAU. APPAREIL À LASER DE CLASSE 2 (SP-680m 1 mW)

